

CONNECTIVITY: LAN PRODUCTS

Patton MicroBridges transparently connect Ethernet LANs using existing synchronous connections.

Ethernet MicroBridge Family

Patton Models 2121, 2124, 2130, & 2135

Don't route it bridge it! Patton's Ethernet Bridges provide you a cost effective and hassle-free solution to connect LANs over the WAN. The MicroBridge can also be used to segment your LAN to prevent an overload of traffic over your WAN.

Patton's MicroBridge enables you to easily connect Ethernet LANs across the WAN. The Patton MicroBridge offers a variety of interfaces to make your WAN connections including X.21, V.35, RS-232 and RS-530 interfaces. The MicroBridges eliminate the cost and hassle associated with cabling by including a built in 6 foot (182.88cm) or 6 inch (15.24cm) serial cable. For the LAN interface all models are equipped with an 802.3 10Base-T RJ-45 jack and allows direct connection to your network switch.

The Patton Ethernet MicroBridges operate transparent to higher layer protocols. The MicroBridges pass higher-layer broadcast, multi-cast, unicast, and data frames over the WAN. The MicroBridge is also PPP ready supporting standards based layer-2 protocol interfacing. Using PPP, the MicroBridges have the flexibility to be used in conjunction with all other third party PPP compliant equipment. The MicroBridges are fully compatible with each other as well as Patton's full line of bridging products.

Patton's MicroBridge will give you a cost effective solution to bridging your LANs over the WAN. All you have to do is plug it in and let the MicroBridge do all the work! For more information, visit us at www.patton.com.

Transparent LAN bridging

*Passes higher layer protocols
such as IP Packets*

Connects Directly to the LAN

*802.3 10Base-T LAN connection via RJ-45
connects to an Ethernet Hub/Switch*

Variety of WAN Interfaces Available

*Ensures a no-hassle connection
to your WAN Interface*

Standards Based

*Fully compatible with all PPP compliant
third-party equipment*

Automatic Learning and Aging

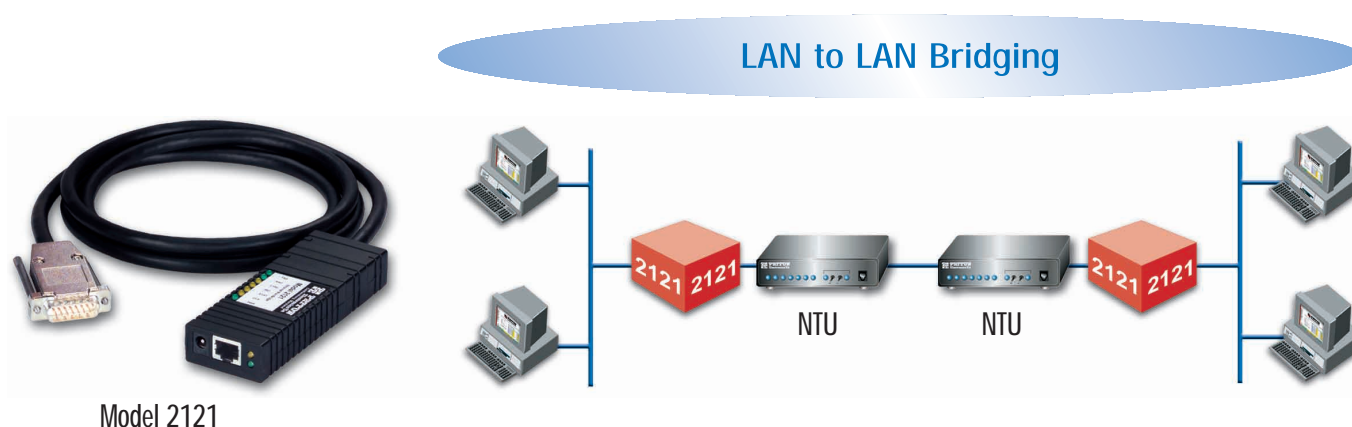
*Supports up to
4,096 MAC addresses*

Easy to Monitor

*LEDs for monitoring LAN link
status and RS-232 control signals*

PATTON

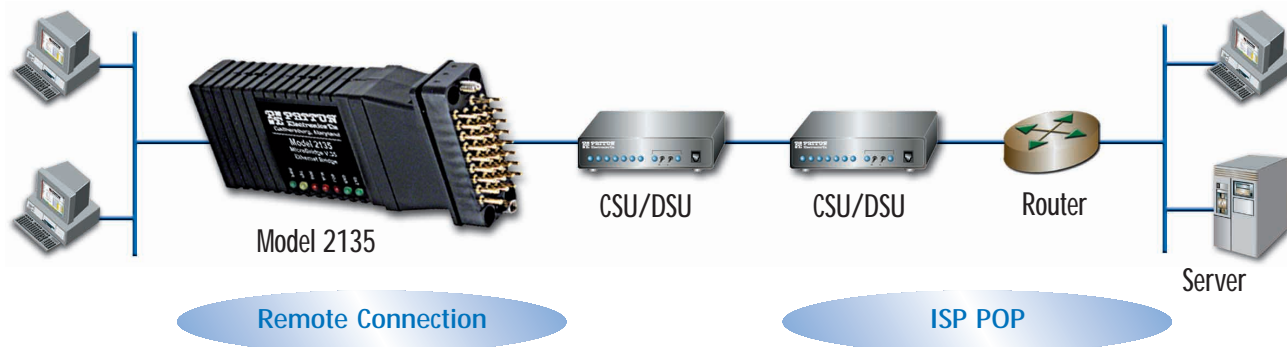
NTU to NTU Application



Application

The Ethernet MicroBridge series can be used in applications where service providers are using PPP half-bridging to connect customer networks without the need for an extra router. The serial interface to the remote bridge will function as a virtual Ethernet interface, effectively extending the router's serial port connection to the remote network. An Ethernet interface then connects directly to a local switch. All routing is done on the service providers' equipment, thus saving on equipment, configuration, and maintenance costs.

CSU/DSU to CSU/DSU Application



MicroBridge Family

					
	2121/DM-X/UI	2124/DM-X/UI	2130/DM-X/UI	2135C/CM-X/UI	2135/CM/UI
DTE Interface	X.21	RS-232	RS-530	V.35	V.35
Network Interface	IEEE 802.3 10Base-T (RJ-45)				
Power Supplies	UI (100-240 VAC) or optional -48 VDC				
Dimensions	3.5 L x 2.1 W x 0.78 H inch (9.0 L x 5.3 W x 2.0 H cm)				
Weight	0.72 lbs (0.32 kg)	0.72 lbs (0.32 kg)	0.72 lbs (0.32 kg)	0.72 lbs (0.32 kg)	0.45 lbs (0.20 kg)
Transmission	Synchronous up to 10 Mbps				
Protocol	PPP (RFC 1661) with Bridging Control Protocol (RFC 1638)				
Memory	512 kbytes RAM; 128 kbytes FLASH memory				
Temperature	0–50° C				
Humidity	Up to 90%, non-condensing				

NOTE: X = "L" 6-foot serial cable or "S" 6-inch serial cable. For example: 2121/DM-L/UI



7622 Rickenbacker Drive
Gaithersburg, MD 20879 USA
Phone +1-301/975-1000
Fax +1-301/869-9293
E-mail marketing@patton.com
URL <http://access.patton.com>