



# High Speed T1/E1 Router

## Patton OnSite™ Model 2603

Patton's OnSite™ T1/E1 Gateway Router is a complete all-in-one network access device which easily connects your LAN to any full or fractional T1/E1 over PPP or Frame Relay routed or bridged connections.

### Standard T1/E1 WAN Interface

RJ-48C and BNC connectors for T1/E1 installations

### PPP and Frame Relay

Versatile WAN options enable deployment into any network

### NAT/NAPT, Firewall, DHCP

Powerful routing features make shared Internet connectivity simple and secure.

### 10/100 Ethernet with MDI-X

Easily connect to any computer or LAN—the built-in communication crossover switch eliminates messy configuration cables.

### WWW/SNMP Manageable

Built-in VT-100 console port makes setup a snap, and you can use the embedded HTTP/SNMP agent to manage the OnSite™ routers from anywhere in the world.

The OnSite™ Model 2603 T1/E1 Gateway Router is the ideal solution for connecting any small to medium enterprise or remote office to an IP/Internet network using a standard T1/E1 interface.

Combining ease-of-use with a full suite of LAN/WAN routing features, the Model 2603 provides selectable bridging or routing functionality along with advanced IP features such as NAT/NAPT, firewall, and DHCP. A complete set of configurable FR/PPP/IP WAN protocols allow a wide range of choices when connecting branches via common WAN services. The Model 2603 boasts easy installation

offering console/VT-100, Telnet, and HTTP/SNMP management options.

The Model 2603 comes with an auto-sensing full-duplex 10/100Base-T Ethernet port, cross-over switch, and internal power supply. The Model 2603 is equipped with an integrated T1/E1 CSU/DSU for connection to full and fractional T1/E1 services.

Patton's Model 2603 high-speed router offers the versatility and reliability demanded for business-class applications at the most affordable price.

Visit [www.patton.com](http://www.patton.com) for more information.

Front panel LEDs show operational status at-a-glance

Proven Patton design

Easy CLI configuration via Console



Internal/external and AC/DC power

10/100Base-T Ethernet port

MDI-X Crossover

BNC and RJ-48C T1/E1 WAN interface

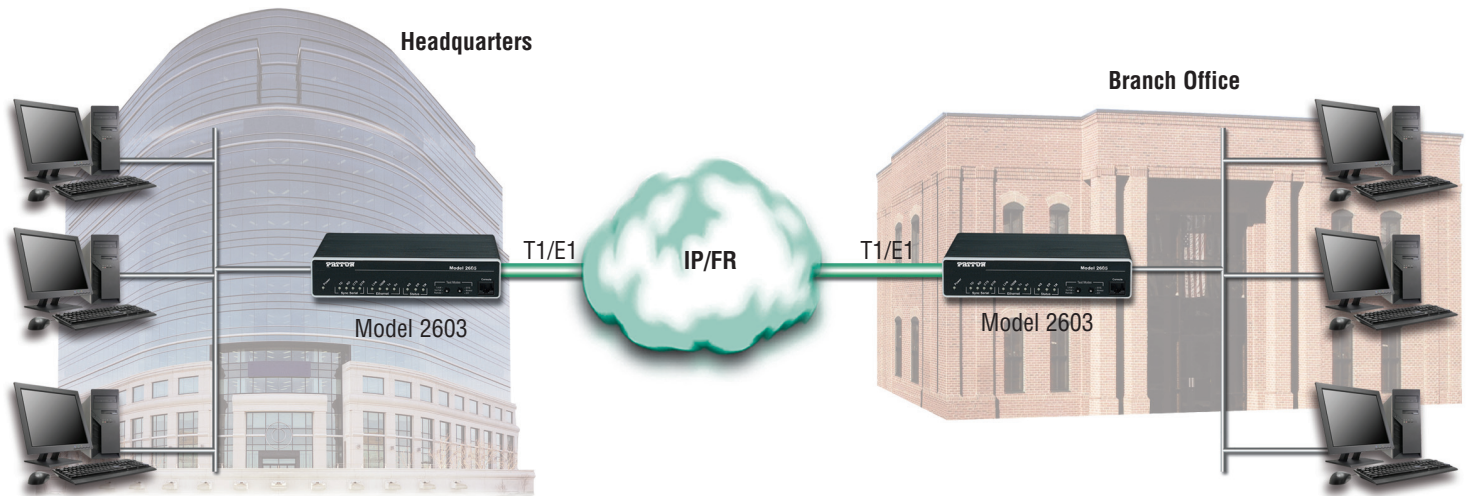
## Why use our OnSite Series Routers?

Patton's OnSite Gateway routers deliver all the advanced features for secure, reliable, and high speed Internet data connections. They combine ease-of-use with powerful data routing to make shared Internet connectivity simple and easy.

With NAT support, the OnSite routers offer convenient and economical operation by using a single IP address while the integrated DHCP server automates IP address assignment for connected LAN computers. Security

is standard with built-in firewall and violation alerting features that protect the network from would-be intruders.

Patton stands behind our products—we are the only company in the industry offering free configuration support, free technical services, and a minimum one-year warranty on all our products.



## Specifications

### T1/E1 WAN Interface

120-Ohm RJ48C and/or 75-Ohm BNC

### Ethernet Connection

Single-port 10/100Base-T switch, auto-sensing, full/half-duplex operation, built-in MDI-X

### Management

EIA-561 RJ-45 RS-232, VT-100 CLI, TELNET, Embedded WEB/HTTP, SNMP, Logging or SMTP on events: POST, POST errors, line/DSL,

PPP/DHCP, IP MPOA AAL5 and Bridged encapsulation RFC 2684 and RFC 1577 IPoATM, LLC/VC Mux support.

### Protocol

IP (RFC 741), TCP (RFC 793), UDP (RFC 768), ICMP (RFC 950), ARP (RFC 826), IP Router with RIP (RFC 1058), RIPv2 (RFC 2453), Integrated DHCP Server (RFC 2131). Selectable IP leases and MAC/IP pairings. DHCP relay agent

(RFC 2132/RFC 1542) with 8 address pools. DNS Relay. IGMP v1 and v2. IP-in-IP (RFC-2003) encapsulation, Ethernet Bridging.

NAT/NAPT with integrated application support, MultiNat with 1:1 mapping, Many:1, Many:Many mapping, NAT Port/IP redirection and mapping.

### Security

DoS Detection/protection. Intrusion detection, Logging of session, blocking and intrusion events and Real-Time alerts, Password protected system management with a username/password for console and virtual terminal, Packet filtering firewall for controlled access to and from LAN/WAN. Support for 255 rules in 32 filter sets. 16 individual con-

nection profiles. Access list determining up to 5 hosts/networks which are allowed to access management system SNMP/HTTP/TELNET

### Indicators

12 LEDs: Power, Link, Loss, Loop, Back-Up WAN signals; Link, TX, RX LAN signals

### Power Supplies

External or internal universal 90–260 VAC input or 48 VDC input.

### Compliance

FCC Part 15A, CE Mark, EMC Directive 89/336/EEC, Low-Voltage Directive 73/23/EEC, EN60950, EN55022 (CISPR 22). FCC part 68.

### Environment

Temperature: 32–122°F (0–50°C); Humidity: 5–90%, non-condensing

### Dimensions

7.3 x 6.6 x 1.62 in. (185 x 168 x 41 mm)

## Model Information

**2603/T/UI:** OnSite T1/E1 Gateway Router; RJ48C 120 Ohm E1/T1 interface; single 10/100 Ethernet Interface; IP Access Feature Set, Internal 90–260 VAC power supply

**2603/T/EUI:** OnSite T1/E1 Gateway Router; RJ48C 120 Ohm E1/T1 interface; single 10/100 Ethernet Interface; IP Access Feature Set, External 90–260 VAC power supply

**2603/T/48:** OnSite T1/E1 Gateway Router; RJ48C 120 Ohm E1/T1 interface; single 10/100 Ethernet Interface; IP Access Feature Set, Internal -48 VDC power supply

**2603/K/UI:** OnSite T1/E1 Gateway Router; RJ48C 120 Ohm E1/T1 interface and BNC 75 Ohm; single 10/100 Ethernet Interface; IP Access Feature Set, Internal 90–260 VAC power supply

**2603/K/EUI:** OnSite T1/E1 Gateway Router; RJ48C 120 Ohm E1/T1 interface and BNC 75 Ohm; single 10/100 Ethernet Interface; IP Access Feature Set, External 90–260 VAC power supply

**2603/K/48:** OnSite T1/E1 Gateway Router; RJ48C 120 Ohm E1/T1 interface and BNC 75 Ohm; single 10/100 Ethernet Interface; IP Access Feature Set, Internal -48 VDC power supply

\* Specifications subject to change without notice.

**PATTON**<sup>®</sup>  
*Let's Connect!*<sup>™</sup>

07MD2603-DS4

**Patton Electronics Co.**  
7622 Rickenbacker Drive  
Gaithersburg, Maryland 20879  
USA  
Phone +1 301 975 1000  
Fax +1 301 869 9293  
E-mail [sales@patton.com](mailto:sales@patton.com)  
Web [www.patton.com](http://www.patton.com)

**Patton-Inalp Networks AG**  
Meriedweg 7  
CH-3172 Niederwangen  
Switzerland  
Phone +41 (31) 985 25 25  
Fax +41 (31) 985 25 26  
E-mail [sales@inalp.com](mailto:sales@inalp.com)  
Web [www.inalp.com](http://www.inalp.com)

**Patton Hungary Zrt**  
Gábor Dénes utca 4.  
Infopark Building C  
Budapest H-1117  
Hungary  
Phone +36 1 439 4840  
Fax +36 1 439 4844  
E-mail [ce@patton.com](mailto:ce@patton.com)  
Web [www.patton.com](http://www.patton.com)

Patton is a registered trademark, and OnSite and Let's Connect! are trademarks of Patton Electronics Company in the United States and other countries.