

Product Model 2707
Product Name G.703 NTU and Converter
Product Manager Jose Ventura **Contact** jose@patton.com

Who is the customer for this product?

The Patton NetLink 2707 Converter and NTU terminates G.703 service and converts to V.35, X.21, and 10Base-T Ethernet. The Model 2707 is a solution targeted to any user or provider of E1 network services. These organizations include carriers, network service providers, and PTTs delivering voice and data services. In certain countries this NTU is provided as part of PTTs service package.

In countries where regulations permit, Enterprise Customers can purchase and install the NTU on their own from distributors and integrators who focus on wide area network and telecom connectivity.

Typical applications include:

Access for Point-to-Point Digital Leased Lines

Enabling the enterprise customer to cost effectively connect their routers, multiplexers, or PBXs to central or remote sites using Clear Channel G.703 services.

Dedicated Internet Access. An ISP uses E1 to deliver high speed Internet traffic from a Point-of-Presence (POP) to a customer premise. An NTU is used at each end of the link and converts the E1 to a serial interface format for use by a router or multiplexer.

LAN-to-LAN Bridging - The Model 2707/I connects remote LANs using standardized G.703 services. A 2707/I is placed at a remote location and another 2707/I, or a router, at a central location MAC and PPP bridging in the 2707/I provide seamless LAN-to-LAN connection over the E1 network.

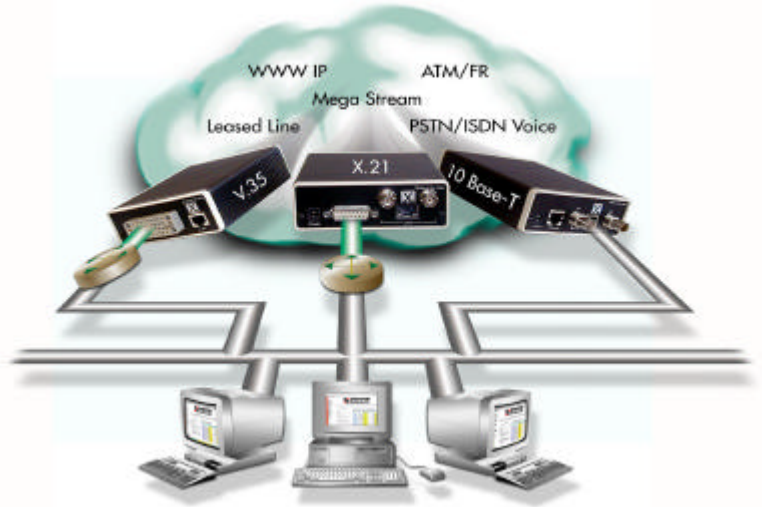


Model 2707 Features and Benefits

V.35, X.21/V.11, or 10Base-T	DTE Interfaces are presented in standard electrical and mechanical form... No adapter cables required.
AMI and HDB3 Coding; Network, Internal, and External clocking options	Flexible Network Features and ease of configuration.
Dual RJ-48C (120-Ohm) or BNC (75-Ohm) network connectors (X.21 and 10Base-T Versions)	Deploy anywhere in your network with confidence that you will have the right interface at the right time.
Built-in V.54 compliant Loop diagnostics	Ensure network reliability and troubleshoot installation problems on the spot.
Choose from 120, 230 VAC or -48VDC power options	Power supply options for any network installation.

Application – Multi-Service G.703 Network Access

The Model 2707 allows simple G.703 network connectivity and access to a variety of services. Customer lease G.703 telco lines to connect central and remote sites in a Point-to-Point configuration, the 2707 connects to routers, multiplexers and PBXs to deliver voice and data using Clear Channel G.703 circuits. ISPs deliver high-speed Internet traffic to corporate customers using last mile E1 lines, at the customer premise the 2707 typically connects to a router's V.35 or X.21 interface. In LAN-to-LAN Bridging application, the 10Base-T port of a 2707/I (E1-EtherRocket) connects directly to a hub at the remote office, at a main office, a router or another 2707/I provide PPP and MAC bridging for a seamless LAN-to-LAN connection over the E1 network.



Ordering Information

Model	Description
2707/C/ UI	G.703 NTU/ Converter; V.35 (M34F) Interface; 100-240VAC Power Supply
2707/D/UI	G.703 NTU/ Converter; X.21/V.11 (DB-15F) Interface; 100-240VAC Power Supply
2707/C /48	G.703 NTU/ Converter; V.35 (M34F) Interface; -48VDC Power Supply
2707/D/48	G.703 NTU/ Converter; X.21/V.11 (DB-15F) Interface; -48VDC Power Supply
2707RC/A/I	G.703 Rack Card NTU/Converter; V.35 (M34F) Interface
2707RC/D/D	G.703 Rack Card NTU/ Converter; X.21/V.11 (DB-15F) Interface
2707RC/C/IA	G.703 Rack Card NTU/ Converter; 10Base-T (RJ-45F) Interface

Optional parts

None, units are shipped complete with:

- 2707 unit
- User manual
- Power Supply (Standalone Units)

Note: Rack cards operate in the 1001 Rack System with single or dual redundant power supplies and with option for local or SNMP Management via 1001CC and 1001MC proxy cards.

Replacement parts

None

Shipping/Export Information

ECCN export number: 85179011 00

Country of origin: United States of America, NAFTA

Total weight boxed: 1.6 lbs. (0.72 kg)

Individual unit: 1.0 lb. (0.45 kg)

MTBF/Repair Information

MTBF: 107099 Hrs. Calculation based on MIL-HDBK-217F, Notice 2 - "Parts Count Reliability Prediction"

Mean time to repair (returns): 7-10 days

Warranty: 1-year parts and labor.

Out of warranty repair rate: \$140, flat rate – contact Tech Support for details + (301) 975-1007 or e-mail support@patton.com

Physical Specifications

Dimensions: : 5.84"L x 4.17"W x 1.50"H (14.84L x 10.6W x 3.84H cm)

Color: Case: black. Lexan front panel: black with white lettering. Rear panel: black with white silkscreen.

Case material: Plastic, Fire retardant

Environmental

Operating Temp: 32 to 122°F (0 to 50°C)

Storage Temp: -13 to 185°F (-25 to +85°C)

Relative Humidity: 5 to 95% RH, non-condensing

Altitude: 0–15000 feet (3,048 meters)

Ventilation requirements: None. Units do not require cooling fans.

Approvals

Safety	Emissions	Telecommunications
CE Marked per EMC directive 89/336/EEC and low voltage directive 72/23/EEC. ESD EN61000-4-2	FCC part 15, Class A EN55022 Class A, conducted and radiated emissions	CTR-12 (G.703)

Power Supplies

AC: 100-240VAC, 50-60Hz

DC: -48VDC (36-60VDC)