



ForeFront™ RAS

ForeFront™ 3125RC

The ForeFront RAS is the all-new carrier-class addition to Patton's dial-up access solutions.

Instant-On Dedicated Access

Click-n-Connect with true V.92 speeds of 54,000 bps downstream & 28,800 bps upstream with the ability to reach 48,000 bps.

Release the full potential of the existing infrastructure & V.92 specs

BroadbandLite delivers enhanced throughput of 10 to 20 kbps on every pair compared with the standard dial-up experience of sub-5 kbps.

Dynamic Modem/Digital Support

All modems support V.92, V.44, V.90, & K56Flex, V.34+ or Lease Line

Standard Dual 10/100 Ethernet Ports

Flexible integration options for your high performance network

Easy Management

Complete SNMP/HTTP management

Litespan 2000 Compatibility

Seamless integration with the Alcatel provided infrastructure

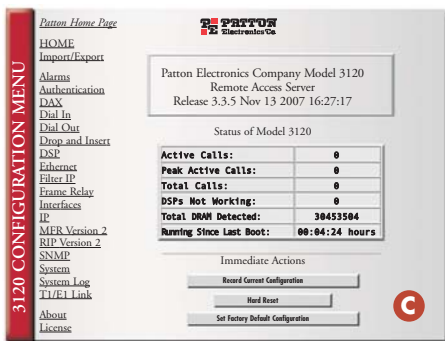
A PMC expansion port—

Network expansion options enable the 3125RC to offer new revenue opportunities



C SNMP/HTTP management—

Embedded HTTP server provides complete configuration and control using a web browser, as well as standard tools



The ForeFront RAS provides the ILEC/IOC, CLEC and PTT with a powerful and scalable access solution.

Building upon Patton's award-winning 2900 series of remote access servers, the ForeFront RAS offers increased port density, enhanced performance, and expanded service capabilities. Scaling from 96/120 ports per blade, a single chassis can support up to 1,560 calls. Through its unique distributed processing architecture, each blade operates independently of other system cards for maximum uptime. With support for enhanced data systems such as remote access services, the ForeFront

RAS supports future multi-service access capabilities such as VoIP and DSL.



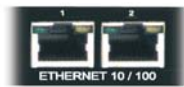
Special Rates Available
Call for Details

Designed to ensure no single point-of-failure for maximum uptime and high availability, the ForeFront RAS's modular platform incorporates redundant AC or DC power supplies and hot-swappable/field-upgradable network resource cards providing a versatile, scalable, and complete remote access solution.

Visit www.patton.com for more information.

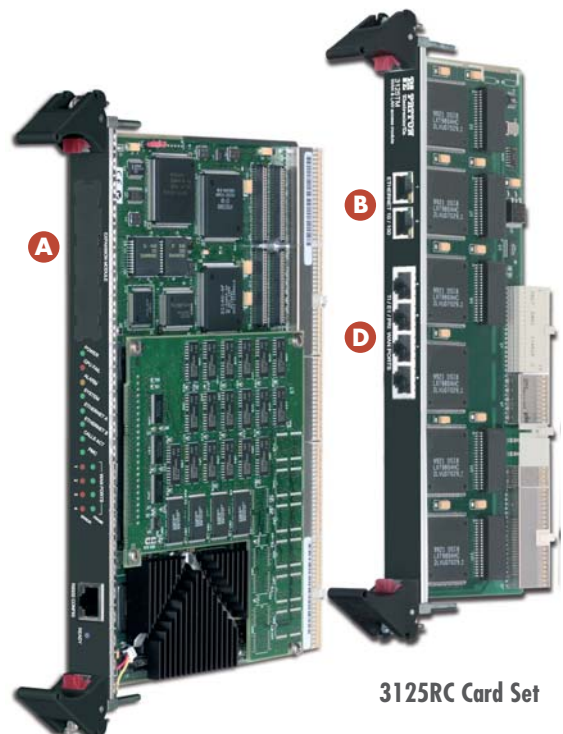
B Dual 10/100 Ethernet Ports—

Allow flexible integration options for your high-performance network. Each 10/100 Ethernet provides a primary and secondary port



D Quad T1/E1 ports for

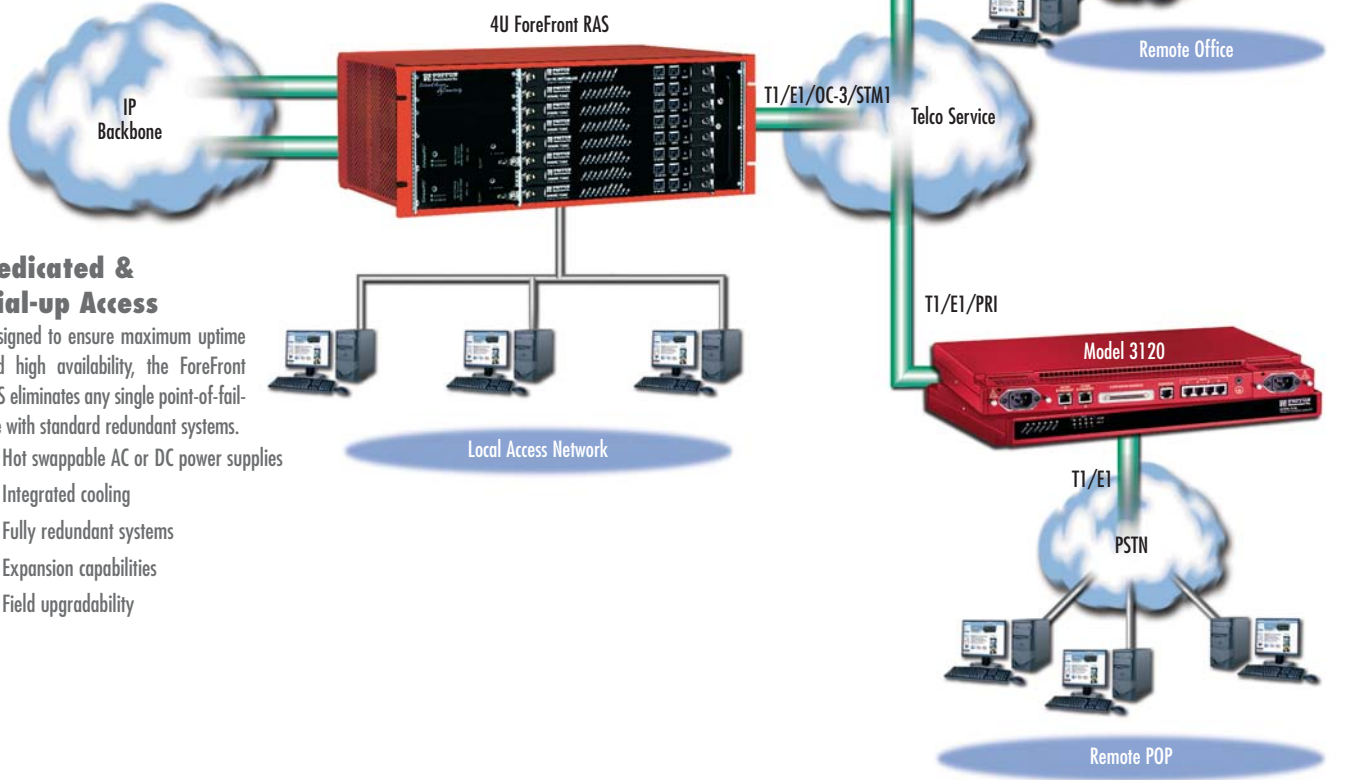
120 ports of RAS or uplink services—Terminate any combination of modems/ISDN connections, or expand into remote locations and use the 3120 as a complete PoP solution



3125RC Card Set

Corporate site/remote office/POP

Patton designed the ForeFront RAS to meet the infrastructure requirements of service providers and corporations who rely on multi-service access servers for their networks. Employees working in remote offices; mobile users; and telecommuters access the network from various line types for critical data and applications required to perform their daily tasks. The ForeFront RAS uses the latest DSP technology to terminate both analog (V.92, V.90, K56Flex, V.34+) and digital ISDN modem calls with the future ability to augment multi-service capabilities.



Dedicated & Dial-up Access

Designed to ensure maximum uptime and high availability, the ForeFront RAS eliminates any single point-of-failure with standard redundant systems.

- Hot swappable AC or DC power supplies
- Integrated cooling
- Fully redundant systems
- Expansion capabilities
- Field upgradability

Model Information

ForeFront Chassis Systems: The ForeFront system is a chassis system supports last-mile access, digital cross connect, and remote access services. The models below are for RAS applications only. For combination systems, consult a Patton Systems Engineer.

Remote access server card set

3125RC/96: 96-port RAS card with T1/E1 transition module

3125RC/120: 120-port RAS card with T1/E1 transition module

Half-pipe 4-slot chassis with fan module, alarm card, redundant power supplies, & H.110 backplane

6276R/RUI: Universal AC supplies

6276R/R48: Universal DC supplies

Full-pipe 8-slot chassis with fan module, alarm card, redundant power supplies, and 2.16 backplane

6476R/RUI: Universal AC supplies

6476R/R48: Universal DC supplies

Xtreme 17-slot chassis with fan module, alarm card, redundant power supplies, and 2.16 backplane

6676R/RUI: Universal AC supplies

6676R/R48: Universal DC supplies

PE-Inalp Networks Private Ltd

An Associate of

PATTON
Electronics Co., USA

Old No. 14 and New No.6,
Brahadambal Road,
Nungambakkam High Road
Chennai: 600 034, India
Phone **+91 44 45490395/6/7**
Fax **+91 44 4549.0394**
Email **sales@patton.co.in**
Web **www.patton.co.in**

Patton-Inalp Networks AG

PATTON
inalp
networks

Meriedweg 7
CH-3172 Niederwangen
Switzerland
Phone **+41 (31) 985 25 25**
Fax **+41 (31) 985 25 26**
E-mail **sales@inalp.com**
Web **www.inalp.com**

Patton Electronics Co.

PATTON
Electronics Co.

7622 Rickenbacker Drive
Gaithersburg, Maryland 20879
USA
Phone **+1 301 975 1000**
Fax **+1 301 869 9293**
E-mail **sales@patton.com**
Web **www.patton.com**

07M3125RC-DS2

Patton is a registered trademark and IPLink is a trademark of Patton Electronics Company in the United States and other countries.