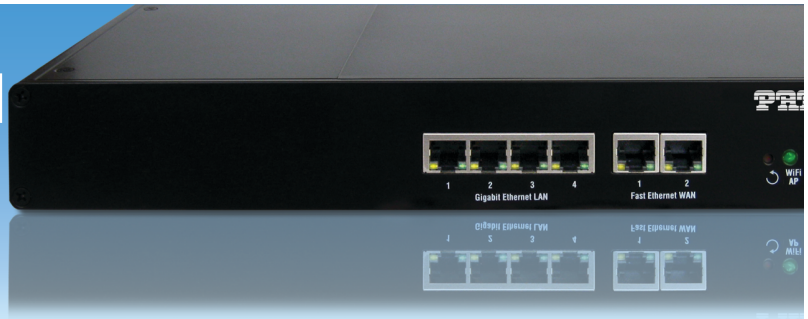


Bandwidth-on-Demand Bonding Router

Model BODi rS™ BD004



Patton's BODi rS is small, light and full featured. Unique bonding, load balancing and failover technology ensures bandwidth robustness and network survivability. All this combined with IPsec VPNs and WiFi mesh capability makes BODi rS the ideal fixed or mobile solution for secure, seamless network connectivity and backup. Always. Everywhere.

Key Features

- Multi-modem bonding avoiding network loss
- Modems harnessed internally
- Load balancing & intelligent failover
- Bandwidth allowance control
- VPN 256-bit AES encryption for highly secure communications
- Built-in dual WiFi—delivering WiFi Mesh capabilities
- Capability to prioritize links—reducing costs
- Automatically switch to best available link
- Vehicle mountable

Ultimate On-The-Go Performance

The BODi rS mobile VPN bonding router automatically shares internet traffic across wired, wireless & satellite links. This increases connection stability, reliability and makes maximum use of all available bandwidth. Users also have the ability to scale bandwidth on-the-go, adding or removing connections, giving priority to lower cost links when demand allows, thus minimizing costs while still providing excellent reliability that scales as needed.

BODi rS also guarantees uptime making it the ideal solution for mobile connectivity with network failover and bandwidth robustness.

Survivability: Network Bandwidth Assurance

BODi rS combines up to seven 3G/4G, WiMAX, LTE, VSAT, WiFi, and other mobile connections to deliver consistently high speeds and five nines availability. Combine up to four USB modems, three ethernet modems and add broadband landline connections for blazing fast internet connectivity

and data transfer anywhere, anytime.

BODi rS is the perfect solution for high availability connectivity and internet failover. This is especially important for applications in e-Healthcare, security alarm companies and critical infrastructure where loss of connectivity can be catastrophic, resulting in huge revenue losses and potential risk to human life.

Mobility: Fully Portable & Rapidly Deployable

A highly durable, rugged enclosure, and multiple bonded connections make BODi rS the ultimate mobile bandwidth-on-demand solution.

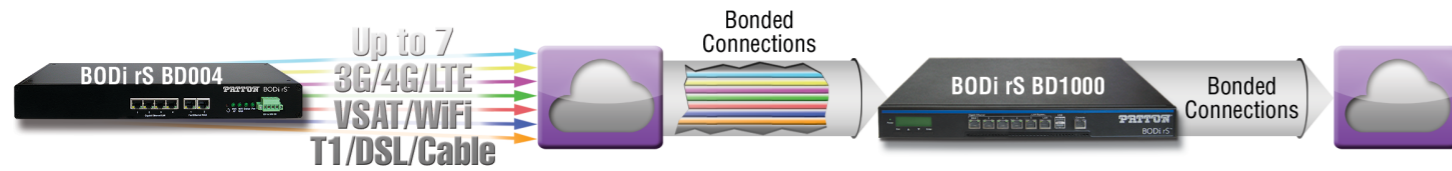
By using BGAN & VSAT networks, remote and marine applications can avail of high speed & reliable connectivity while on the go. By aggregating multiple wireless links, BODi rS offers users broadband-like internet speeds for high quality reliable communications.

For extra security and ruggedness, all modems are harnessed internally. This avoids loss and damage to the modems.



BODi rS™ BD004 Bandwidth-on-Demand Bonding Router

Bandwidth-on-Demand Bonding—Bond multiple mobile internet connections for broadband-like speeds while on-the-go



Hospitality: Public/Private Assured Wired & Wireless Access



Mobile: Broadband-like speeds while on the move



BODi rS™ BD004 Bandwidth-on-Demand Bonding Router

Bandwidth-on-Demand Load Balancing—Choose between 7 load balancing profiles for the optimum performance to fit your needs



Marine: Reliable & Survivable Internet at sea & at port



Mobile: Aggregate multiple wireless links for broadband on the go



Solution Specifications*

WAN Interface

- 4 x USB (Internal)
- 2 x Gig Ethernet Ports
- 802.11a/b/g/n 300 Mbps WiFi WAN; 802.11ac/a/b/g/n 866 Mbps WiFi AP; 2412–2472 MHz and 5180–5825 MHz
- Support for PPPoE, Static IP, DHCP
- WAN Link Health Check
- Bandwidth Allowance Monitor

LAN Interface

- 4-Port Gigabit Ethernet Switch
- Extended DHCP Options
- DHCP Reservation
- Support for Dynamic DNS services
- DNS Proxy for LAN Clients

Antenna

- 4 x 5.5 dBi Magnetic Base

- Omni Metal Antenna for WiFi

Complete VPN Solution

- Site-to-Site VPN Bonding
- Bandwidth Aggregation
- Intelligent Failover
- 256-bit AES Encryption
- Pre-shared Key Authentication
- Dynamic Routing PPTP VPN Server
- RADIUS, LDAP Authentication
- IPsec VPN (Network-to-Network)

Load Balancing

- Intelligent Failover
- Session Persistence Per-Service Load Distribution
- Multiple Algorithms

Networking

- NAT and IP Forwarding

- Static Routes Port Forwarding
- Many to One, One to One NAT
- NAT Pool
- SIP ALG, H.323 ALG
- UPnP, NAT-PMP
- WINS Server

Advanced QoS

- User Groups
- Bandwidth Reservation Individual Bandwidth Limit
- Custom Application QoS
- Application Prioritization

Device Management

- Web Administrative Interface
- Email Notification
- Active Client & Session Lists
- Bandwidth Usage Statistics
- Web Reporting Services

- Syslog Service SNMP v1, v2c and v3
- 3.5 mm line out
- RS-485/ RS-422

Operating Temperature

-40 to 65°C (-40 to 149°F)

Power

- DC power for vehicle charging
- AC/DC adaptor for charging and operation

Dimensions

35.6L x 13.5W x 4.3H cm
(14L x 5.4W x 1.7H inch)

Weight

1.8 kg (4 lb)

Compliance

- CE
- FCC Part 15 Class A
- NRTL Recognized

Ordering Info

BODi rS BD004: Mobile, Bonding and Balancing Internet Router

BODi rS BD1000: Bonding and Balancing Network Hub

* Specifications subject to change without notice.



Patton Electronics Co.
7622 Rickenbacker Drive
Gaithersburg, Maryland 20879, USA
Phone +1 301 975 1000
Fax +1 301 869 9293
E-mail sales@patton.com
Web www.patton.com

Patton-Inalp Networks AG
Meriedweg 7
CH-3172 Niederwangen, Switzerland
Phone +41 (31) 985 25 25
Fax +41 (31) 985 25 26
E-mail we@patton.com
Web www.patton.com

Patton Hungary Zrt
Gábor Dénes utca 4., Infopark Building C
Budapest H-1117, Hungary
Phone +36 1 439 4840
Fax +36 1 439 4844
E-mail ce@patton.com
Web www.patton.com