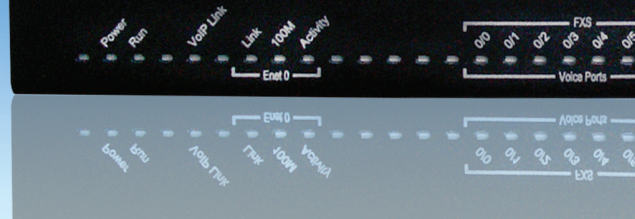


# Analog VoIP IAD

## SmartNode™ Model 4830 DSL Series

PATTON



Analog VoIP IAD with ADSL2+ or G.SHDSL interface. The SmartNode™ 4830 DSL Series connects up to 8 phone lines, VoIP, and Internet/VPN access across the integrated broadband WAN interface. Offering bundled voice, data, and VPN services, the SmartNode IAD delivers best-in-class VoIP quality for lowest cost networking.

### Integrated DSL Uplink

Built in ADSL for up to 24 Mbps. Four-wire G.SHDSL option also available for up to 11.4 Mbps.

### Full VoIP Protocol Support

SIPv2, H.323v4, T.38 & Fax Bypass, G.723, G.729, G.726, G.711, echo cancellation, silence compression, comfort noise, DTMF relay.

### FXS, FXO, or Combinations

Up to 8 FXS ports connect to your standard telephone or PBX, 2 or 4 FXO ports allow local PSTN connections. Programmable call routing and switching.

### Access & Network Routing

Connected to any broadband or access provider. IPv4, RIPv2, ICMP, NAT/PAT, Firewall, DHCP, DynDNS, IPsec VPN.\*

### QoS Guaranteed Voice & Data

Quality of Service ensures voice traffic gets priority without shutting down your Ethernet LAN.

### Management & Provisioning

Web-based management, SNMP, command line interface, and auto-provisioning for automated configuration & software upgrades.

### Why SmartNode?

- Patton Quality
- Made in the USA
- Unrivaled Customer Support
- FREE Tech Support and Upgrades

The SmartNode™ 4830 DSL Series combines a toll-quality analog VoIP gateway with DSL connectivity—without the need for a separate DSL modem. This all-in-one gateway also includes IGMP v2/v3 proxy functionality to support video delivery services. This is triple-play at your fingertips!

The SN4830 DSL Series offers models with combinations of 2 to 8 FXS ports, and 2 to 4 FXO ports. The 10/100Base-T LAN port supports Auto-MDIX and VLAN. The integrated DSL port provides direct access to broadband networks. Like every SmartNode, the 4830 DSL series supports industry standard VoIP signaling protocols SIP, H.323, T.38 Fax-Relay, plus fax and modem-bypass and is interoperable with leading softswitches and VoIP services.

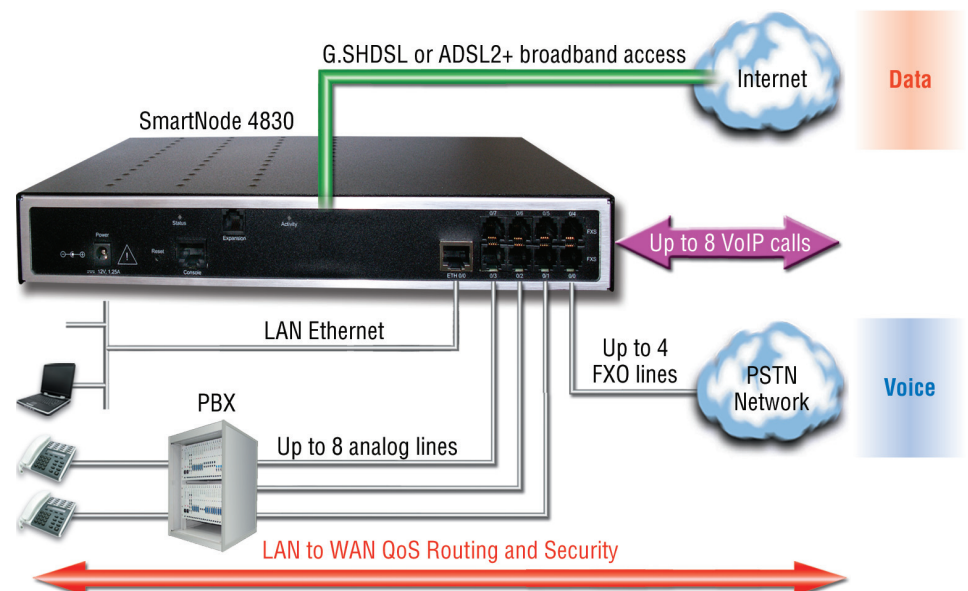


Quality of Service (QoS) is ensured by using advanced voice prioritization and traffic management. DownStreamQoS™ ensures voice without interruptions even over best-effort internet connections. Packet labeling according to 802.1p, ToS, and DiffServ enable integration into managed QoS networks.

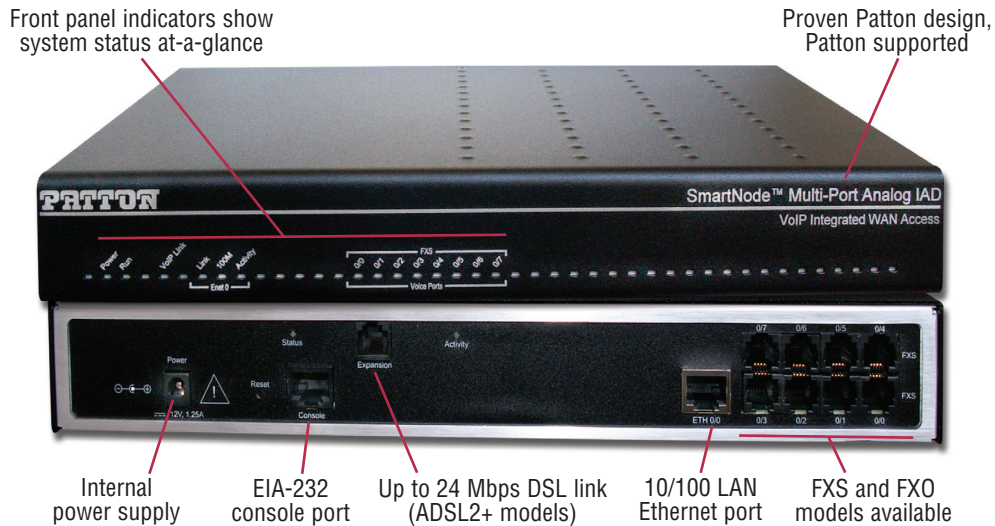
The SN4830 is the solution for service providers and network integrators looking for seamless integration of analog phones and PBXs into converged VoIP-data networks. It ensures easy setup, continuous trouble-free operation, and cost-effective deployment. The support of the leading VoIP signaling protocols ensures interoperability with third-party equipment and protects your investments for the future.

Visit [www.patton.com/smartnode](http://www.patton.com/smartnode) for more information.

## Typical Application: Network Integration



# SmartNode™ Model 4830 DSL Series Analog VoIP IAD



## Specifications\*\*

### Voice Signaling

SIPv2 • H.323v4 • SIP call transfer, redirect • Overlap or en-bloc dialing • DTMF in-band, out-of-band • Configurable tones

### Broadband Access

ADSL2+ ITU-T G.992.5, Annex A/M, B (up to 24 Mbps) • 4-wire G.SHDSL ITU-T G.991.2, Annex A, B, F, G (Up to 11.4 Mbps) • PPPoE • 8 PVCs, each UBR, CBR, or VBR-rt selectable • I.610 OAM F4/F5 support • G.994.1 (G.hs)

### Analog Connectivity

2-wire Loop start RJ-11/12 • Short haul loop, 1.1 km@3REN • EuroPOTS (ETSI EG201 188) • Programmable AC impedance, feeding, and ring voltage • On hook voltage 29V DC •

Caller-ID Type 1/2 FSK and ITU V.23/Bell 202 generation

### IP Connectivity

One 10/100 Base-T Ethernet port • Auto-MDIX • DHCP Client/Server • PPPoE Client (multi-session) • IP Multi-Netting, VLAN, Secondary IP • IPv4, RIPv2, ICMP • ACL Firewall • DNS, DynDNS • SNTP Client • Optional IPsec VPN (DES, 3DES, AES)

### Voice Processing

G.711 $\mu$ -law/A-law • G.723.1 (5.3 or 6.4 kbps) • G.729ab (8 kbps) • G.726 (16, 24, 32, 40 kbps ADPCM) • G.168 Echo Cancellation (25ms) • 8 parallel analog voice connections • DTMF detection and generation • Silence Suppression and comfort noise • Adaptive and configurable dejitter buffer • Configurable packet length

### Fax and Modem Support

G.711 transparent Fax • T.30 • T.38 Fax Relay (9.6k, 14.4k)

### Call Routing & Services

Regular Expression number matching • Regular expression number manipulation • Least Cost Routing • Number Blocking • Short-Dialing • Digit Collection • Distribution- and Hunt-groups

### Quality of Service (QoS)

Voice priority, DownStreamQoS • Traffic Shaping/Policing • IEEE 802.1p/Q • 4096 VLANs (Tag insertion/deletion) • TOS, DiffServ Labeling

### Management

Web-based GUI • Fully Documented CLI • Telnet and HTTP access • TFTP configuration up- and download • TFTP firmware upgrade •

SNMPv1 agent (MIB II and private MIB) • Built-in diagnostic tools • Secure Auto-Provisioning

### Power & Packaging

Desktop Metal chassis  
Dimensions:  
11.5 x 1.85 x 6.2 in.  
(29.2 x 4.7 x 15.7 cm)  
Weight : 1.85 lbs. (840 g)  
Power Consumption: 4 W  
Operating Temp.: 32–104° F  
(0–40°C)  
Operating Humidity: Up to 90%, non-condensing

### Compliance

EMC Compliance: EN55022 & EN55024  
Safety Compliance: EN 50950  
CE Compliance  
FCC Part 15 Class A

## Model Information

**SmartNode™ FXS/FXO VoIP Gateway Routers, Integrated G.SHDSL WAN, External UI power**

**SN4832/JS2GS/EUI:** 2-FXS VoIP Gateway Router, G.SHDSL WAN  
**SN4834/JS2GS/EUI:** 4-FXS VoIP Gateway Router, G.SHDSL WAN  
**SN4836/JS2GS/EUI:** 6-FXS VoIP Gateway Router, G.SHDSL WAN  
**SN4838/JS2GS/EUI:** 8-FXS VoIP Gateway Router, G.SHDSL WAN

**SmartNode™ FXS/FXO VoIP Gateway Routers, Integrated ADSL2+ Annex A/M/B WAN, External UI power**

**SN4832/JSA/EUI:** 2-FXS VoIP Gateway Router, ADSL WAN  
**SN4834/JSA/EUI:** 4-FXS VoIP Gateway Router, ADSL WAN  
**SN4838/JSA/EUI:** 8-FXS VoIP Gateway Router, ADSL WAN  
**SN4838/4JS4JOA/EUI:** 4-FXS, 4-FXO VoIP Gateway Router, ADSL WAN  
**SN4834/2JS2JOA/EUI:** 2-FXS, 2-FXO VoIP Gateway Router, ADSL WAN

\* IPsec VPN requires a separate license.

\*\* Specifications subject to change without notice.



**Patton Electronics Co.**  
7622 Rickenbacker Drive  
Gaithersburg, Maryland 20879, USA  
Phone +1 301 975 1000  
Fax +1 301 869 9293  
E-mail [sales@patton.com](mailto:sales@patton.com)  
Web [www.patton.com](http://www.patton.com)

**Patton-Inalp Networks AG**  
Meriedweg 7  
CH-3172 Niederwangen, Switzerland  
Phone +41 (31) 985 25 25  
Fax +41 (31) 985 25 26  
E-mail [sales@inalp.com](mailto:sales@inalp.com)  
Web [www.inalp.com](http://www.inalp.com)

**Patton Hungary Zrt**  
Gábor Dénes utca 4., Infopark Building C  
Budapest H-1117, Hungary  
Phone +36 1 439 4840  
Fax +36 1 439 4844  
E-mail [ce@patton.com](mailto:ce@patton.com)  
Web [www.patton.com](http://www.patton.com)

07MSN4830DSL-DS6