



SmartNode™ 4940

Multi-Port T1/E1/PRI Enterprise VoIP Media Gateway

IP-enable your legacy PBX system with the SmartNode™ 4940 PRI VoIP Media Gateway, the cost-effective solution for seamless migration to IP Telephony and Unified Communications.

Up to 120 VoIP calls...

with four T1/E1/PRI ports and one Gigabit Ethernet port.

Proven Interoperability

Interoperable with all the major-brand softswitches and IP-PBXs.

Comprehensive Signaling Protocol Support

Supports SIP, H.323, ISDN, and T1/E1 telephony—plus T.38 and SuperG3 FAX—over TDM/PSTN and IP/Ethernet services simultaneously.

Transparent Telephony Features

Complex number manipulation and mapping for seamless integration with existing infrastructures, CLIP, CLIR, hold, transfer and much more.

High Precision Clock

Delivers DECT PBX interoperability with reliable fax performance.

SmartNode™ Awards

- **2010 Internet Telephony Product of the Year:** SmartNode™ 5400
- **2009 Internet Telephony Product of the Year:** SmartNode™ 4400 Series
- **2008 Internet Telephony Product of the Year:** SmartNode™ 4961
- **2007 Internet Telephony Product of the Year:** SmartNode™ S-DTA
- **2006 Internet Telephony Product of the Year:** SmartNode™ 4960
- **2005 Internet Telephony Product of the Year:** SmartNode™ 4630

As enterprises move toward unified communications, the SmartNode™ 4940 provides a smooth transition by either IP-enabling traditional PBX systems for SIP trunking over existing Internet connection, adding PSTN-breakout for number portability, or enabling PSTN access for IP PBX and unified communications systems. Preserve investment in legacy phone equipment while taking the next step toward unified communications with Patton's proven SmartNode™ VoIP solutions.

With comprehensive signaling protocol support, the SN4940 supports SIP, H.323, ISDN, and T1/E1 telephony—plus T.38 and SuperG3 FAX—over TDM/PSTN and IP/Ethernet services simultaneously.

With up to four T1/E1/PRI ports, connect to any switch, PBX or data network for up to 120 simultaneous calls using SIP, T1, E1 or PRI signaling. The SN4940 also supports all

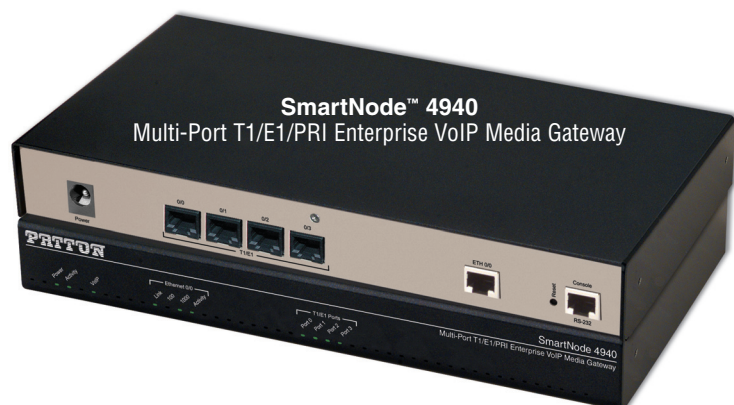
the industry-standard CODECs, delivering toll-quality voice on every call.

Proven interoperability with all the major-brand softswitches and IP-PBXs makes it easy for carriers and enterprises to deploy future-proof VoIP systems quickly and profitably. Featuring high reliability and touchless auto-provisioning, tens of thousands of SmartNode™ devices are up-and-running in enterprise and carrier networks worldwide.

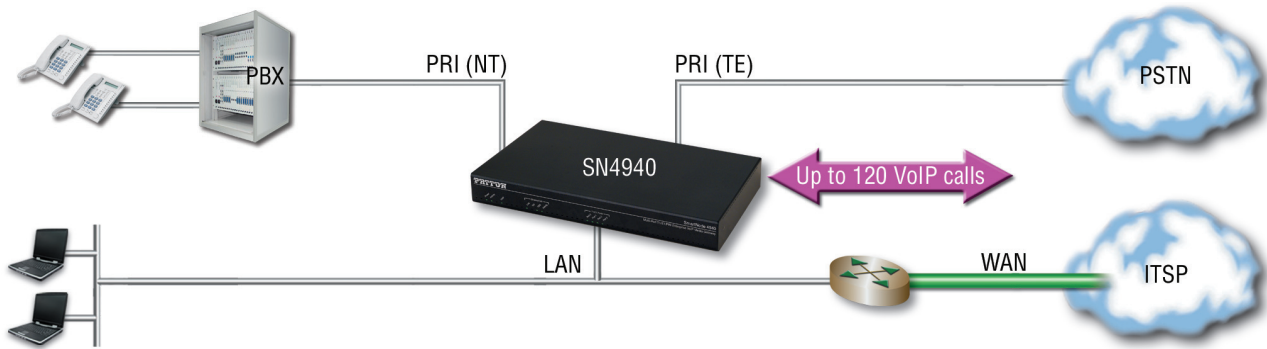
Ensure business continuity. By providing PSTN breakout, SmartNode™ ensures voice survivability for reliable enterprise-class communications.

Patton's unique high-precision clock enables first-line IP telephony services in demanding DECT PBX environment plus reliable FAX and modem performance.

Visit www.patton.com for more information.



Application Diagram—Convert Legacy PBX to VoIP



Specifications*

Voice Connectivity

Up to four software selectable T1/E1/PRI ports (NE/TE) • Signaling support (ISDN DSS-1, NI-2, Q.SIG, CAS Robbed bit loop and ground start, E&M, immediate, wink, double wink) • ISDN AOC/ECT • ISDN speech, audio & data (Fax Gr 4, UDI 64, RDI64) • ISDN supplementary services • SIPv2 & H.323v4 • CAS protocols: RBS (Loop start, ground start, E&M wink, intermediate, double-wink) and R2/MFC-R2 (Q.400–Q.490 and Configurable country profiles)

Voice Processing

Codec G.711 a-law/mu-law, G.723, G.729ab, G.726, G727, T.38 fax relay (9.6 k, 14.4 k) • G.711 transparent fax and bypass • 128 ms echo cancellation

Call Routing and Services

Regular expression call routing and manipulation • number blocking • short-dialing • digit collection, distribution and hunt groups

Data Interfaces

One 10/100/1000 TX Ethernet Port • Autosensing • Auto-MDI • Full-duplex fragmentation

Management

Web/HTTP, CLI with local console & remote Telnet access • TFTP configuration & firmware loading • SNMP MIB II and product MIB • Secure auto provisioning for both firmware & unit/subscriber configuration • Built-in diagnostic tools (trace, debug, call generator)

Power & Packaging

Desktop metal chassis

Dimensions: 11.0W x 1.5H x 7.0 D in. (28.0W x 3.9H x 18.0D cm)

Weight: < 30 oz (850g)

External Power: 100–240VAC (50/60 Hz)

Power Consumption: < 15W

Operating Environment

Temp: 32 to 104°F (0 to 40°C)

Humidity: up to 90%, non-condensing

Compliance

EMC: EN55022 and EN5502 • Safety: EN 60950 • CE • FCC Part 15 Class A; Part 68; CS-03

* Specifications subject to change without notice.

Ordering Info

SN4940 T1/E1/PRI VoIP Gateway: Hi-Capacity, 1 GigEthernet, External UI power

SN4940/1E15V/EUI: 1 T1/E1/PRI, 15 VoIP channels, upgradeable to 30 calls

SN4940/1E24V/EUI: 1 T1/E1/PRI, 24 VoIP channels, upgradeable to 30 calls

SN4940/1E30V/EUI: 1 T1/E1/PRI, 30 VoIP Channels, non-upgradeable

SN4940/4E120V/EUI: 4 T1/E1/PRI, 120 VoIP channels, non-upgradeable

SN4940/4E15V/EUI: 4 T1/E1/PRI, 15 VoIP channels, field upgradeable to 60 channels

SN4940/4E24V/EUI: 4 T1/E1/PRI, 24 VoIP channels, field upgradeable to 60 channels

SN4940/4E30V/EUI: 4 T1/E1/PRI, 30 VoIP channels, field upgradeable to 60 channels

SN4940/4E48V/EUI: 4 T1/E1/PRI, 48 VoIP channels, field upgradeable to 60 channels

SN4940/4E60V/EUI: 4 T1/E1/PRI, 60 VoIP channels, non-upgradeable

SN4940/4E96V/EUI: 4 T1/E1/PRI, 96 VoIP channels, field upgradeable to 120 channels

Options & Accessories

SNSW-49V6: 6 channel Voice Upgrade Key for SN4960 VoIP IADs. Software expansion for additional voice channels.

SNSW-VPN2: Software option for IPsec VPN, including DES/3DES and AES encryption, IKE and Voice-Over-VPN

SNSW-QSIG2: Support for ISDN Q.SIG.

Note: For complete ordering list, contact sales@patton.com

*For High-Precision option: use SN4941 in SKU (ex: SN4941/4E30V/EUI)

PATTON
let's Connect!™

07MSN4940-DS5

Patton Electronics Co.
7622 Rickenbacker Drive
Gaithersburg, Maryland 20879
USA
Phone +1 301 975 1000
Fax +1 301 869 9293
E-mail sales@patton.com
Web www.patton.com

Patton-Inalp Networks AG
Meriedweg 7
CH-3172 Niederwangen
Switzerland
Phone +41 (31) 985 25 25
Fax +41 (31) 985 25 26
E-mail sales@inalp.com
Web www.inalp.com

Patton Hungary Zrt
Gábor Dénes utca 4.
Infopark Building C
Budapest H-1117
Hungary
Phone +36 1 439 4840
Fax +36 1 439 4844
E-mail ce@patton.com
Web www.patton.com

Patton is a registered trademark and the terms SmartNode, DownStreamQoS, and SessionRouter are trademarks of Patton Electronics Company in the United States and other countries.