



SmartNode™ Branch Exchange (SNBX)

A fully-loaded Enterprise IP PBX appliance made easy for any business. Supporting up to 64 simultaneous calls, the SNBX is plug and play to fit any network setup—bringing you Unified Communications without breaking the bank.

SNBX

▶ Running 3CX

www.3CX.com

Plug and Play

Comes with 3CX Phone System and 64-bit Windows 7 already installed.

Up to 64 Calls

Provides up to 128 simultaneous calls without transcoding, 64 calls with transcoding and supports up to 500 extensions.

Monitoring and Management

Web GUI for device monitoring and application management. Also includes built-in SmartNode Gateway configurator.

Fits Your Network

BYOP (Bring your own phone)—Choose your own IP phones or softphones; no vendor lock-in.

Keep Your Existing Equipment—Add a SmartNode Gateway to connect existing analog/ISDN equipment.

SIP Trunks or PSTN—Save on monthly call costs using SIP Trunks or receive and make calls via the standard PSTN using SmartNode Gateways and VoIP Routers.

The SNBX is a plug and play appliance loaded with Microsoft Windows 7 and 3CX Phone System, an award-winning software-based IP PBX for Microsoft Windows. Capable of supporting up to 128 calls, the SNBX can support any 3CX edition supporting 4, 8, 16, 32 and 64 simultaneous calls with RTP Relay and Transcoding. (The 3CX Phone System license must be purchased separately.)

In addition to running 3CX Phone System, the SNBX web GUI provides device monitoring and application management; plus, is open to 3rd party applications. No keyboard or mouse is required since the web GUI can be accessed from anywhere.

The SNBX fits *your* network by supporting most IP phone or softphone. You can keep your trusted PSTN lines or analog/ISDN phone equipment by simply adding Patton's SmartNode Gateways. Or you can provide secure, prioritized VoIP by using a SmartNode VoIP Router to connect to your SIP trunks. Setup is quick and easy as the SNBX provides a built-in SmartNode configuration tool.

3CX Phone System

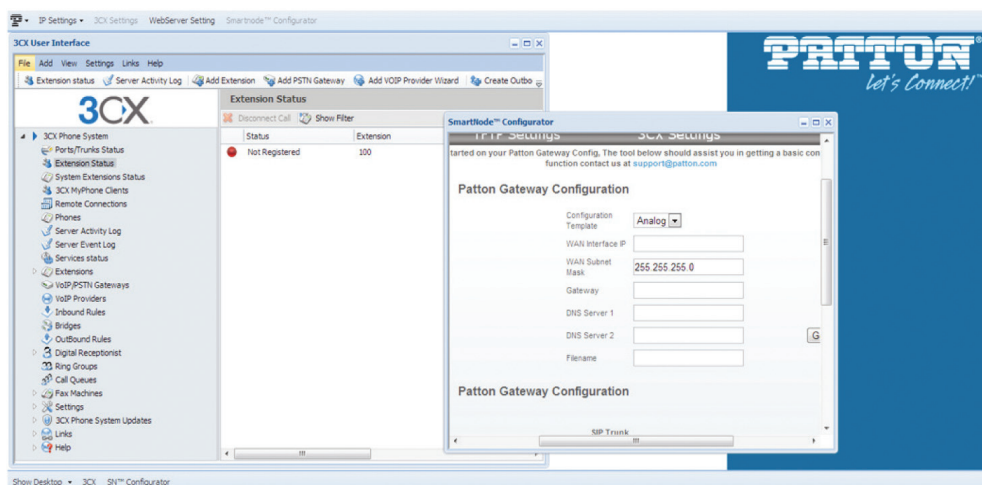
Break free from expensive proprietary phone systems and move up to an open standard IP PBX that increases employee productivity and costs much less.

Evolve your communications by enabling employee mobility. Calls can be made and answered seamlessly from outside the office, and voicemail and faxes received via email.

Globalize your business by connecting branch offices and re-directing local customer service numbers via the internet to your phone system at negligible cost.

3CX Phone System is made to scale with your business and save you money on consultants' fees. Supported plug-and-play IP phones are simple to add with the administrator interface, and supported Patton hardware has configuration templates built right in. Overcome the limitations of hardware-based PBX systems, reduce costs significantly and add advanced communication features that will make your company more efficient and competitive!

Visit www.patton.com/smartnode for more information on SmartNode products.

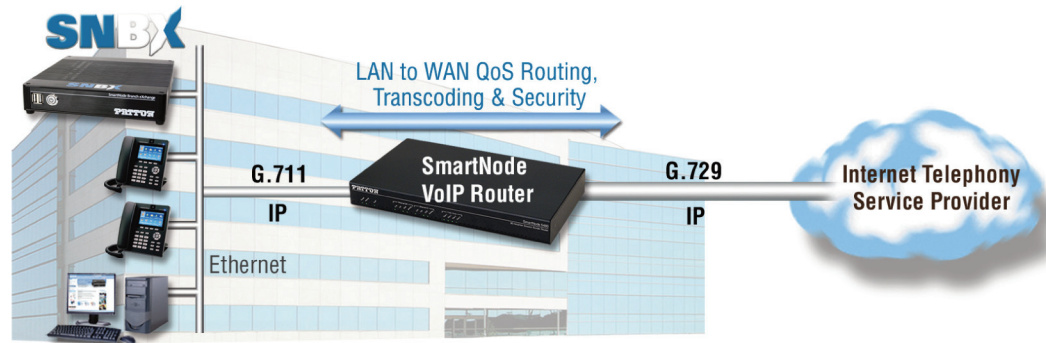


Application Diagrams

PSTN



SIP Trunks



Hardware Specifications*

Processor

Intel Dual Core Atom with Hyper Threading 1.8 Ghz

Memory

4GB of DDR3 RAM
250GB hardrive

Ethernet

1 10/100/1000 Ethernet Port

Operating System

Windows 7 (64 bit)

3CX Phone System

Version 12

Dimensions

1.4 x 7.5 x 7.7 in.

Weight

2.8 lbs. (1.27 kg)

External Power Supply

12 Volt 5 Amp

Capacity

64 calls with Transcoding • 128 calls with RTP Relay • 20 cps • 100 CAPS

3CX Phone System Features*

General Phone System Features

Call Logging, Call Reporting • Blind Call Transfer, Attended Call Transfer • Call Forward on Busy or No Answer • Call Routing (DID)/Caller ID • Conference Calling • Auto Attendant/Digital Receptionist • VoiceMail/Music on Hold • Ring Groups & Hung Groups • Central Phonebook • Call Parking and Pickup • Call Queuing • Call Recording • Dial by Name • MWI—Message Waiting Indicator • BLF Status Updates • Conference Rooms • Intercom • Paging

Softphones

Supports Windows, Android 1.6 and iPhone 4.0 and Up • Manage Softphone from Management Console • Includes Tunnel to Avoid NAT Problems • Auto-

Provisioning • Remote Configure SIP Standards Support Fully Supports RFC 3261 • SIP Forking • Establish SIP Trunks with other SIP Servers

Management and Scalability

Web-Based Management Console • Configuration Wizard • Real Time Webbased System Status • Integrated Web Server • Automated Backup and Restore • Firewall/NAT Friendly Configuration of External Extensions via Tunnel • MS Windows Server Certified • Integrated Enterprise Database (PostgreSQL) • VM Ware/Hyper V

Unified Communications & Mobility

3CX MyPhone Self-Service User Portal • Receive VoiceMail via Email • Make Video Calls • Advanced Forwarding Rules

Based on Caller ID, Time and Type of Call • Integrate Branch Offices with 3CX Bridges • Standards-based Presence Information • Integrated Fax Server • Receive Faxes via Email as PDF

IP Phone Management

Automatic Phone Provisioning • Remotely manage IP phones • Manage IP Phones Network-Wide • Plug and Play Support • Provision Network-Wide with Correct Settings • Restart one or all Phones Remotely • Manage Firmware Network-Wide • Update Firmware Network-Wide

3CX MyPhone

Web-based Utility • Transfer Calls • Shows Incoming Calls • Shows Caller ID • Shows Personal Call History • Divert

Calls to VoiceMail v Queue Monitoring • Shows Status of Other Extensions • Run as Presence Monitor with Desk Phone 3rd Party Applications Integration Microsoft Outlook Integration • Salesforce Integration • HTTP API to Integrate with any Web CRM • Microsoft Exchange 2007 / 2010 UM

Devices and Providers

Supports Popular IP Phones • Supports VOIP Gateways & cards • Make and Receive Skype Calls • Supports Popular SIP/VoIP Providers • SIP Trunking Support • Free Communication Link to 3CX and other SIP Servers

Codecs (Voice Compression)

G711 (A-law and u-law), GSM, Speex, Ilbc • G722 • G729

* Specifications subject to change without notice.

PATTON[®]
Let's Connect![™]

07MSNbx-3CX-DS3

Patton is a registered trademark and the terms SmartNode and Let's Connect! are trademarks of Patton Electronics Company in the United States and other countries.

Patton Electronics Co.
7622 Rickenbacker Drive
Gaithersburg, Maryland 20879
USA
Phone +1 301 975 1000
Fax +1 301 869 9293
E-mail sales@patton.com
Web www.patton.com

Patton-Inalp Networks AG
Meriedweg 7
CH-3172 Niederwangen
Switzerland
Phone +41 (31) 985 25 25
Fax +41 (31) 985 25 26
E-mail sales@inalp.com
Web www.inalp.com

Patton Hungary Zrt
Gábor Dénes utca 4.
Infopark Building C
Budapest H-1117
Hungary
Phone +36 1 439 4840
Fax +36 1 439 4844
E-mail ce@patton.com
Web www.patton.com