

Headend Control and Management System Server

Visuality™ T7900 Secure Command and Control Server



The Model T7900 provides an operator with total and secure control of all remote Visuality surveillance assets from a single point of management. Full IPsec tunnel termination provides secure access and remote control over T771X remote units.

Command and Control Assets From a Single Server

A T7910 operator can have total and secure control of up to 24 remote units from a single point of management.

Real-Time Location & Tracking with Integrated GPS

Integration with Google Earth GIS enables T7900 to display locations of T771X remotes, in real-time, overlaid onto street maps and satellite imagery.

Command Shift™ Technology

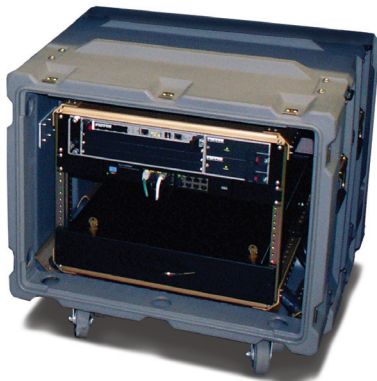
Using Command Shift, you can quickly transfer T771X assets from one T7900 Command Server to another on an ad hoc basis

End-to-End Secure Communications

IPsec support for secure encrypted transmission of media content and command-and-control traffic.

Ruggedized Case

Ready for instant deployment in covert operations.



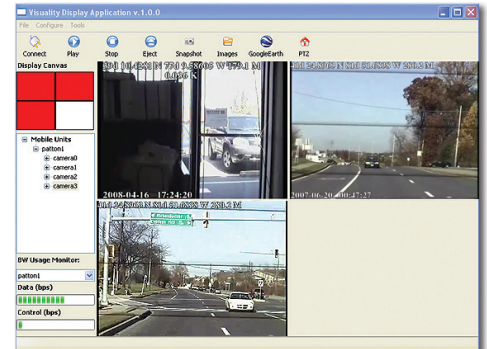
The T7900 performs as the gatekeeper of the Visuality system. When used with Patton's Visuality™ T771X remote units, a T7910 operator can have total and secure control of up to 24 remote units from a single point of management. It provides a comprehensive picture of all field units, their configuration settings, and status.

The T7900 terminates encrypted tunnels (IPsec using 256-bit AES encryption), and combines incoming audio-visual and GPS data, making it available to authorized users over the local network.

All command-and-control traffic is sent over encrypted tunnels, ensuring end-to-end security.

The GPS data is formatted for use with the Google® Earth™ Geographic Information System (GIS) which enables the T7900 to display the locations of T771X remotes—in real-time—overlaid onto street maps and satellite imagery.

The T7900 is a full-fledged edge-router, VPN, and firewall solution running Patton's TrinityAE™ operating system. It provides integrated authentication and authorization of users, IP interface, and routing configuration, DNS and DHCP servers, and quality of service (QoS) management.

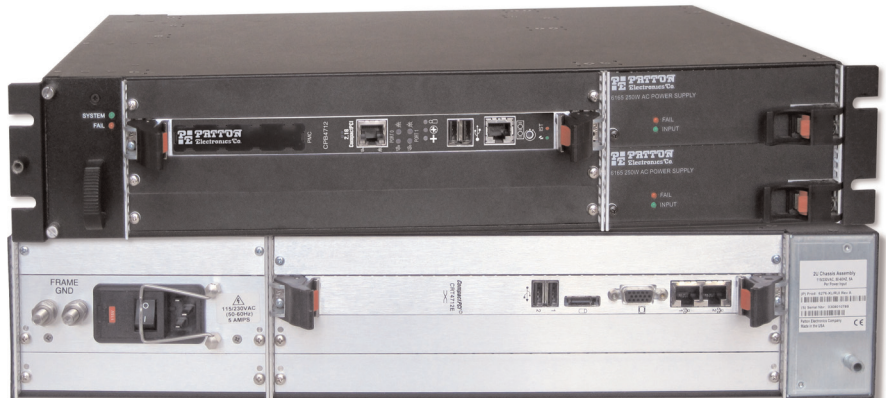


Mobile Video Server Management console powered by TrinityAE™.

Users can monitor T771X remotes in real-time from the Web Management Interface (WMI) page of the primary T7900 server. From the WMI, users can update the database of registered T771X remotes to add or remove remotes, and assign remotes to primary or secondary T7900 servers. The WMI page also includes status of the T771X remotes.

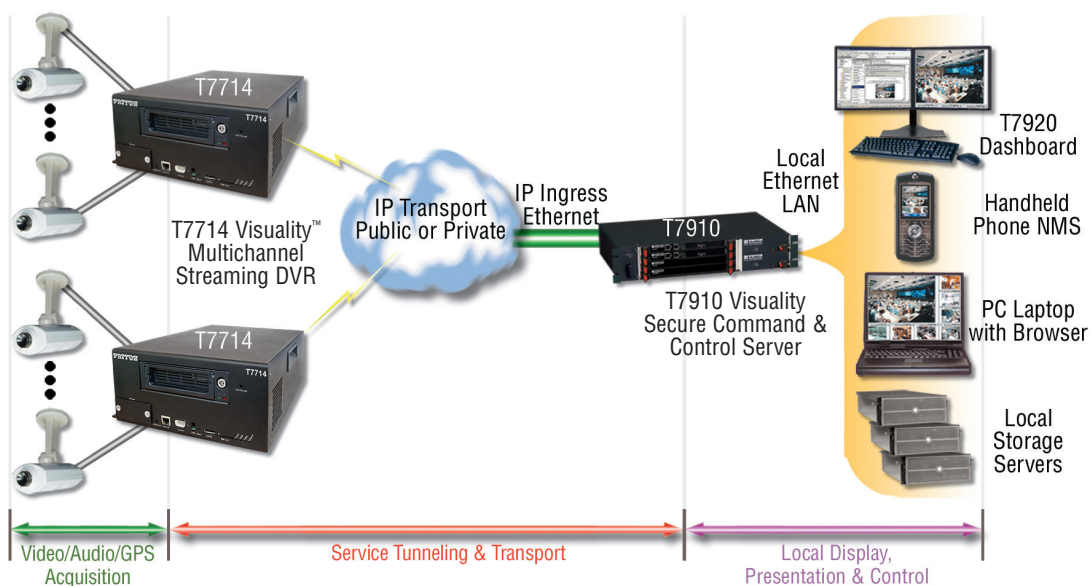
For the most demanding surveillance applications, Patton's Visuality T7900 Secure Command and Control Server, when used with T771X remotes, offers the only scalable, integrated solution that provides streaming, storage, and payout for mobile or fixed applications.

Visit www.patton.com for more information.



Typical Deployment

The T7900 is the gatekeeper for the headend system. It terminates the VPN connections originating from remote T771X units and remote user equipment, such as Personal Digital Assistants (PDAs) and provides end-to-end secure connectivity between them. It aggregates the audio-visual content and GPS data coming from the remote units and distributes it over the local network. It resolves and distributes command and control information emanating from user applications.



Specifications

Processor

Dual-Core Intel® Xeon® LV Processor

Speeds

1.6, 2.0GHz

Chipset

Intel® 3100 Chipset

FSB

667-MHz Front Side Bus, 33-bit/33MHz cPCI Bus interface

Video

Via PMC

Memory

2 DDR2-400 SO-DIMM sockets; 512MB to 4GB of total DDR2

Ethernet

(2) 100/1000 Ethernet Interfaces on 2.16 Switched Fabric; 10/100/1000 Ethernet Interface

Serial

Serial ATA, Serial Port

PMC

(1) 64-bit/133MHz PMC site

USB

(2) High Speed USB Ports

BIOS

PCI 2.2 AMI



T7910 Visuality Secure Command & Control Server

PE-Inalp Networks Private Ltd

An Associate of

PATTON
Electronics Co., USA

Old No. 14 and New No.6,
Brahadambal Road,
Nungambakkam High Road
Chennai: 600 034, India
Phone **+91 44 45490395/6/7**
Fax **+91 44 4549.0394**
Email **sales@patton.co.in**
Web **www.patton.co.in**

Patton-Inalp Networks AG

PATTON
inalp networks

Meriedweg 7
CH-3172 Niederwangen
Switzerland
Phone **+41 (31) 985 25 25**
Fax **+41 (31) 985 25 26**
E-mail **sales@inalp.com**
Web **www.inalp.com**

Patton Electronics Co.

PE PATTON
Electronics Co.

7622 Rickenbacker Drive
Gaithersburg, Maryland 20879
USA
Phone **+1 301 975 1000**
Fax **+1 301 869 9293**
E-mail **sales@patton.com**
Web **www.patton.com**

07MT7900-DS1

Patton is a registered trademark, and TrinityAE and Visuality are trademarks of Patton Electronics Company in the United States and other countries.