

NETLINK™ ACCESS PRODUCTS

*xDSL Modems, NTUs and Interface Converters for E1/Fractional E1 Terminations -
- Priced to Fit any Application or Budget*

G.703/G.704 Products

E1/Fractional E1 Network Solutions

Patton's NetLink E1/Fractional E1 products provide access solutions for Internet, Intranet, Campus Networks, Frame Relay, or ATM services over 64k G.703, n x 64k or 2 Mbps G.703/G.704 lines. These products allow G.703 Network Extension up to 10km using DSL technology, Network Termination at the G.703 demarcation, and bi-directional Interface Conversion from standard interfaces, such as V.11/X.21, Ethernet, and V.35.

Since it's more about solutions than products, Patton offers a range of E1 solutions that fit your application. Patton delivers modular standalone, micro-package or rack card alternatives. Not the typical "one-size-fits-all" fare.

All NetLink Products are CEX approved and are ready for connection to European and international PSTN networks. With price and performance for all E1/Fractional E1 requirements, network planners can choose feature-rich products that fit any application, or that satisfy any budget. NetLink Products are quality-crafted in Patton's ISO 9001 certified, BABT approved USA-based factory. Patton is also Y2K compliant.

Connect without Issues

Serial (including V.11/X.21), Ethernet, and Voice/Data Interfaces as Selectable Options

Ready for Europe

Our Products are CEX Approved

Priced-to-Fit

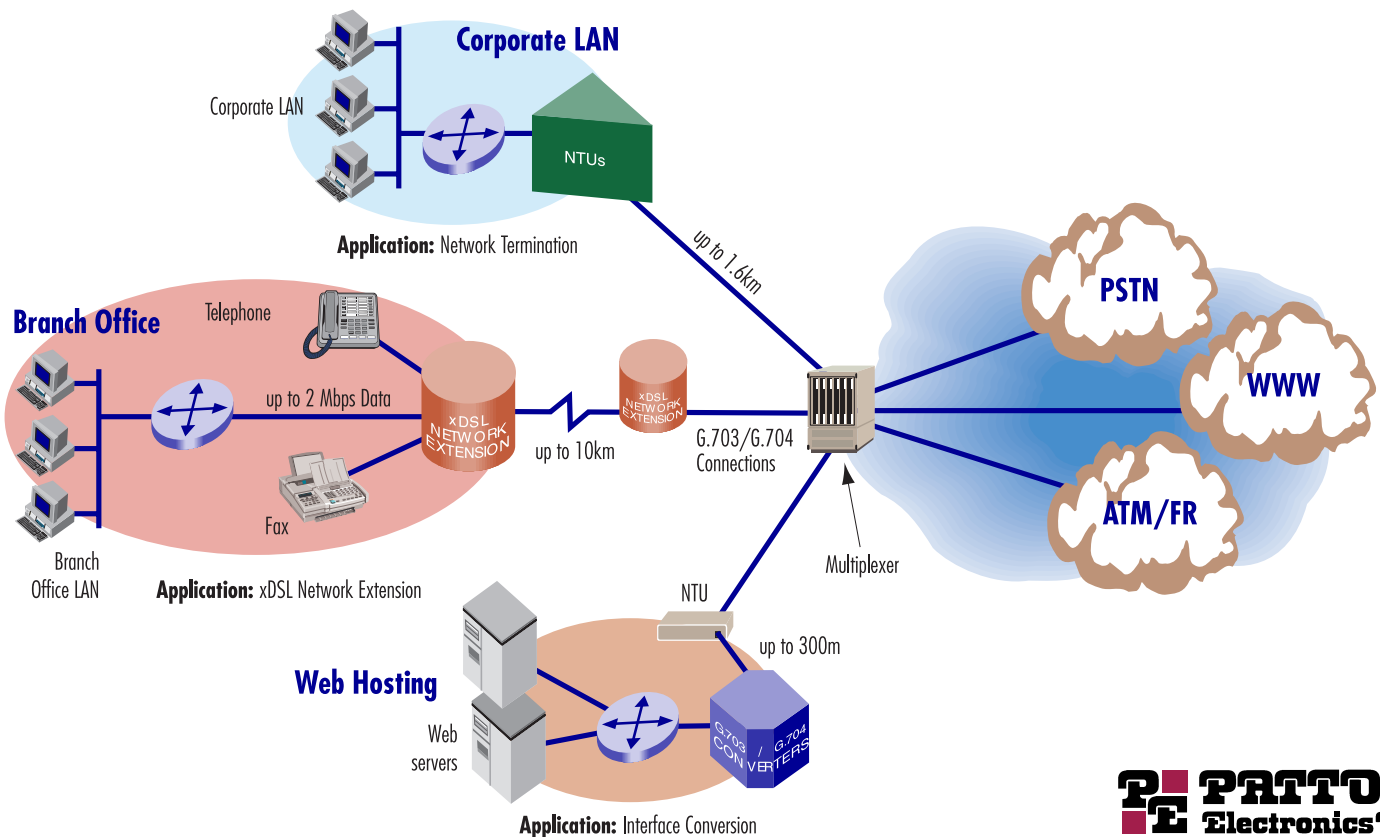
Modular Standalones, Micro Packages and Rack-Mountable Cards

Supports all Data Rates

64k G.703, nx64k and 2 Mbps
G.703/G.704

Various Applications

Interface Converters, NTUs, and Network Extension using DSL



xDSL Extension Devices

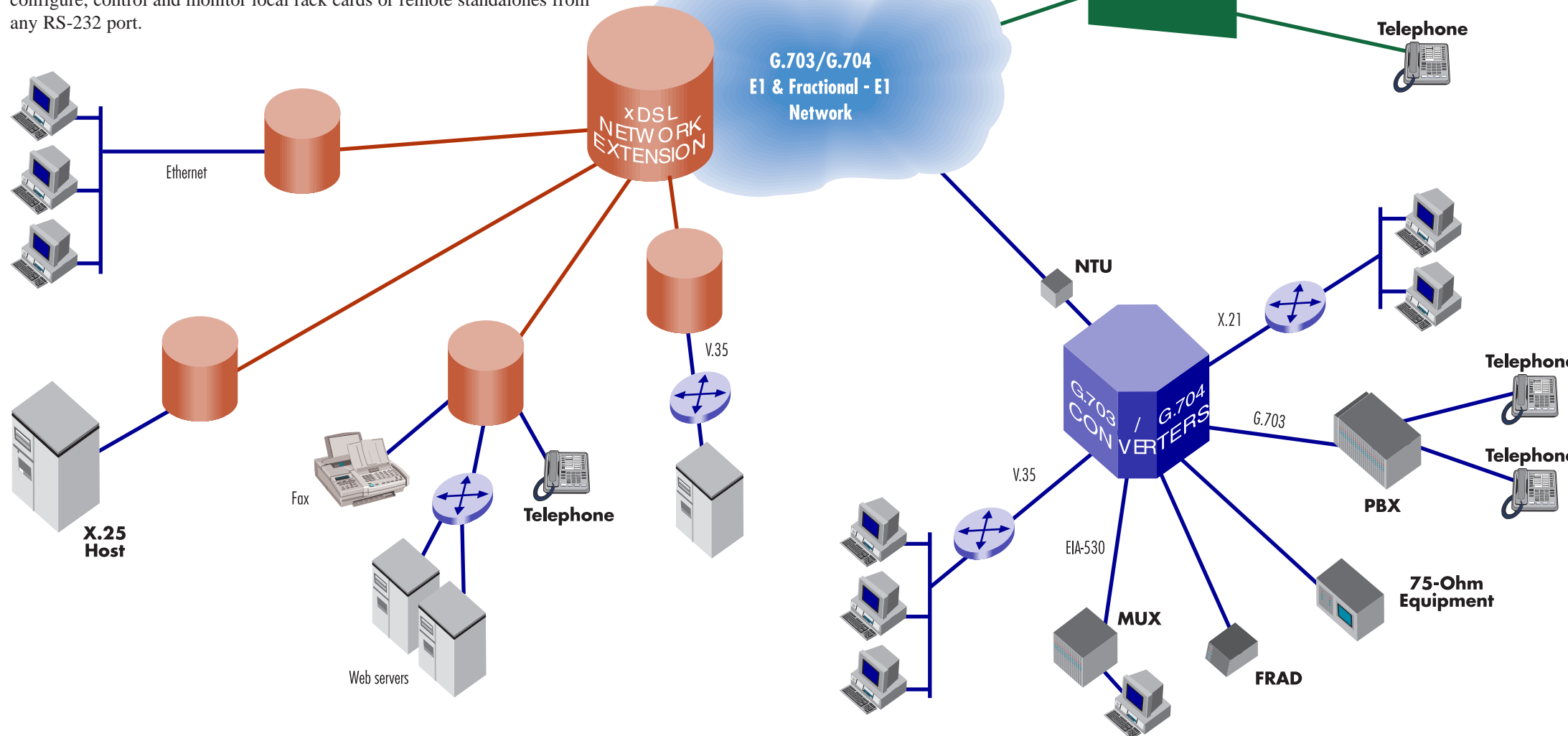
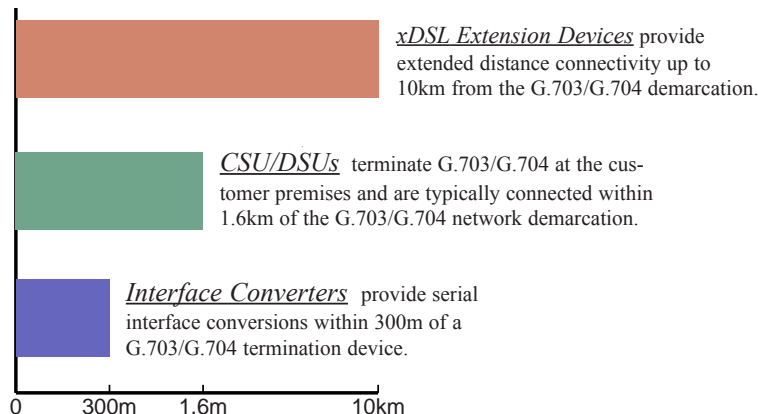
Products include:

- Model 1092A**.....128kbps iDSL Standalone and Rackmount Modem
- Model 1095**.....2Mbps mDSL Standalone and Rackmount Modem

Patton's 1092A iDSL and 1095 mDSL Modems give service providers or corporate enterprises the ability to extend G.703/G.704 connectivity up to 10km from the G.703 demarcation point. What's more, Patton's xDSL standalone modems incorporate modular *QuikConnect* serial interfaces. These allow network managers to locate 19" rack-mounted cards at the G.703 demarcation/central site, and V.11/X.21, Ethernet, V.35, Voice/Data or G.703 devices at the remote site. It's a completely modular solution!

The *NetLink iDSL Model 1092A* offers extended distance connectivity at 128kbps over a single twisted pair using 2B1Q encoding. The *NetLink mDSL* is available in three standalone versions: **Model 1095-T1**, which supports data rates from 128kbps to 1.536 Mbps; **Model 1095-E1**, supporting data rates from 128 kbps to 2.048 Mbps; and **Model 1095 CampuS** which supports data rates from 128kbps to 2.304 Mbps. A rack-mountable version is also available, supporting all rates from 128kbps to 2.304Mbps.

Both Model 1092A and 1095 are SNMP/HTTP manageable using a rack mounted SNMP agent card. Using a standard Web browser, an operator can configure, control and monitor local rack cards or remote standalones from any RS-232 port.



Network Termination Unit

Products including:

- Model 2703**.....2 Mbps Clear Channel Standalone with DTE Sub-Rates
- Model 2715**.....nx64 up to 2 Mbps in a Micro-Package
- Model 2715RC**.....2U high Rack Card with 90-260VAC or 48VDC Power Options
- Model 2725**.....nx64 up to 2 Mbps Standalone Unit with modular *QuikConnect* support, SNMP/HTTP Management and AC or DC Power Options

Patton's NetLink NTUs provide network terminations up to 1.6km from the G.703 demarcation. Available in plug-in micro-packages, modular standalones, and SNMP/HTTP manageable rack-mount cards, these products fit any application, and any budget.

All of Patton's NetLink NTUs are CE marked and carry the CEX Permission-to-Connect approval, enabling connections to service provider networks throughout Europe and the world.

Interface Converters

Products include:

- Model 2070**.....64k G.703 in a Micro Package
- Model 2073**.....Modular standalone Unit with QuikConnect Support
- Model 2094**.....nx64kbps in a Micro Package
- Model 2702**.....2Mbps G.703 Clear Channel Unit
- Model 460**.....75 ohm to 120 Balun Converts Balanced to Unbalanced Signals

Many user devices require direct G.703/G.704 connectivity to a multiplexer, PBX or switch. Typically these connections are made within 300m of the mux or switch and do not require direct connection to the PSTN network.

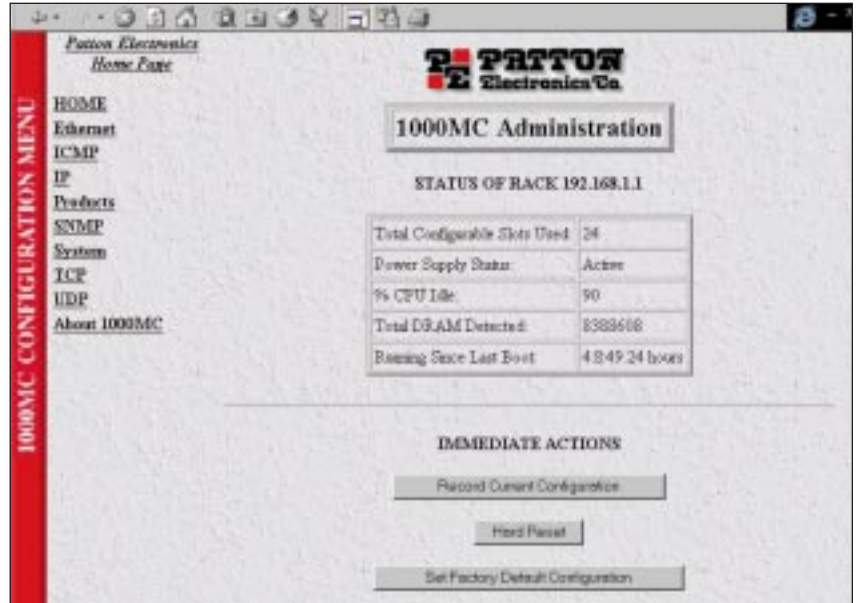
Patton's Converters provide bi-directional signal conversion between G.703/G.704 and standard serial interfaces such as V.35, X.21, V.24 interfaces, or Ethernet Bridging applications. A Model 460 even lets you bi-directionally convert 75 ohm coax to 120 ohm twisted pair!

SNMP/HTTP Options

NetLink 2715, 2725, 1092A, and 1095 can be simultaneously managed from a variety of local and remote environments. Using a rack mounted SNMP agent with an embedded HTTP web server, operators can configure, monitor, or receive status from each of these interfaces.

The 1000MC NetLink Management Card is an SNMP proxy agent that mounts in Patton's 2U rack chassis and works with the 2725, 1092A or 1095 cards. The 1000MC supports both generic SNMP management and HTML-based Web management (from most Web browsers), and provides configuration, control and management for the stand alone units.

The Web browser interfaces offer the user the ability to manage both the local and remote devices using a standard Web browser. And a built-in HTTP Web server allows each



management screen to appear as a Web page to the operator (see the illustration above). Now an operator can configure, and monitor NetLink xDSL Modems, NTUs and converters from anywhere in the world.

| | Access Converters | | | | NTUs | | | xDSL Extension Devices | |
|--------------------------------|-------------------|------|------|------|------|------|------|------------------------|--------------|
| Model Number | 2070 | 2073 | 2094 | 2702 | 2703 | 2715 | 2725 | 1092A | 1095 |
| 64k G.703 PCM | ✓ | ✓ | | | | | | | |
| nx64k G.703/G.704 | | | ✓ | | | ✓ | ✓ | (n = 1,2) | (n = 1 - 36) |
| 2M G.703 | | | ✓ | ✓ | ✓ | ✓ | ✓ | | ✓ |
| 75 Ohm Termination | | | ✓ | | ✓ | | ✓ | ✓ | ✓ |
| 120 Ohm Termination | ✓ | ✓ | ✓ | ✓ | | ✓ | ✓ | ✓ | ✓ |
| DTE Interfaces | | | | | | | | | |
| V.35 | ✓ | ✓ | ✓ | ✓ | ✓ | ✓ | ✓ | ✓ | ✓ |
| X.21/RS-422 | ✓ | ✓ | ✓ | | ✓ | ✓ | ✓ | ✓ | ✓ |
| RS-530/RS-449 | | ✓ | | | ✓ | | ✓ | ✓ | ✓ |
| V.24/RS-232 | ✓ | ✓ | | | | | ✓ | ✓ | ✓ |
| Voice & Data | | | | | | | ✓ | ✓ | ✓ |
| Ethernet | | ✓ | | | | | ✓ | ✓ | ✓ |
| 64k G.703 | | ✓ | | | | | ✓ | ✓ | ✓ |
| nx 64 - 2M G.703/G.704 | | | | | | | ✓ | ✓ | ✓ |
| Configuration | | | | | | | | | |
| Control Port/DIP Switch | ✓ | ✓ | ✓ | ✓ | ✓ | ✓ | ✓ | ✓ | ✓ |
| SNMP/HTTP | | | | | | | ✓ | ✓ | ✓ |
| Built-In Router Support | | | | | | | | | |



PATTON
Electronics Co.

7622 Rickenbacker Drive
Gaithersburg, MD 20879 USA
Phone +1-301/975-1000
Fax +1-301/869-9293
E-mail marketing@patton.com
URL <http://www.patton.com>