

Introduction

For today's small and medium businesses (SMBs), implementing software-based 3CX Phone System for Windows offers many benefits over traditional systems including:

- Robust feature sets
- Cost savings
- Easier management
- Scalability
- Enhanced worker productivity

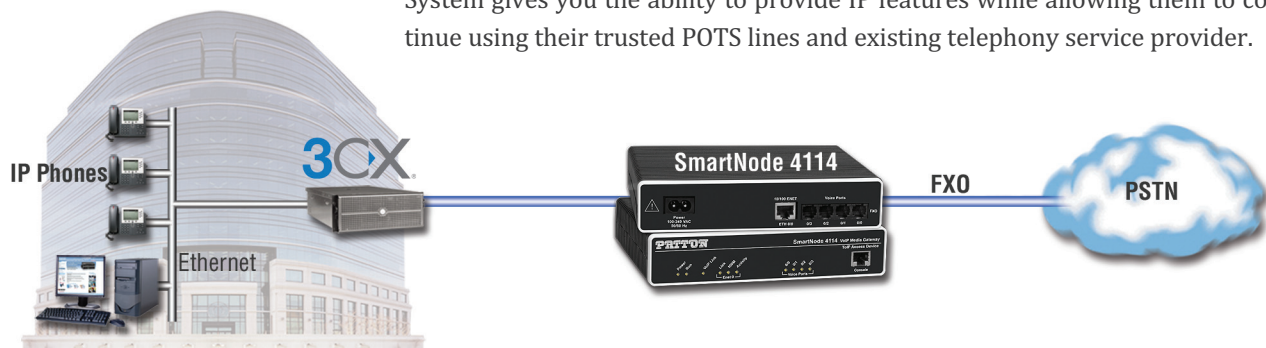
Yet for many businesses, a complete overhaul of their existing telephony infrastructure may not initially be the most desirable approach. For some, there may be reliability concerns in switching to a new unfamiliar VoIP service provider or the availability of data connectivity necessary for VoIP calling. While others may find themselves locked into a service contract with their traditional provider or without the initial capital necessary for purchasing new VoIP equipment.

Patton's SmartNode Gateways give you the ability to leverage your existing traditional phone service provider and telephony equipment that would normally be incompatible in an IP environment. By installing a SmartNode Gateway, small and medium Enterprises around the world are adding benefits of a software-based IP PBX while continuing to use their trusted PSTN lines and phone equipment.

The following sections contain strategies for implementing a Patton SmartNode Gateway into your 3CX environment.

Gateway to PSTN

Many SMBs want to upgrade to a next-generation IP phone system, but find themselves locked in a service contract with their traditional phone service provider. Offering Patton's SmartNode Gateways in conjunction with 3CX Phone System gives you the ability to provide IP features while allowing them to continue using their trusted POTS lines and existing telephony service provider.



Gateway to PSTN (Cont.)

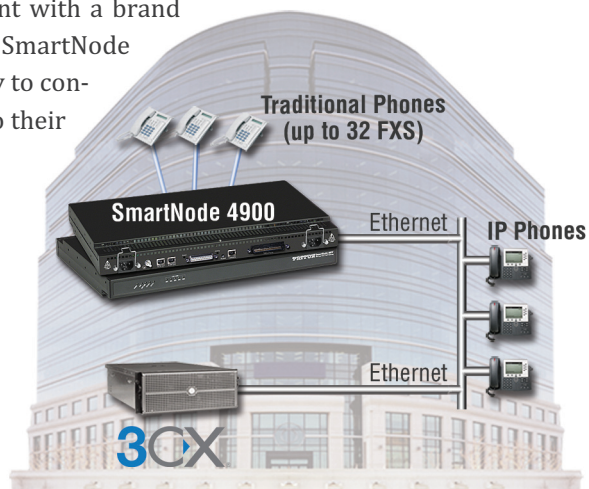
It is also common for SMBs to have concerns with trusting a new unfamiliar VoIP service provider. In these situations, a smooth installation is critical. For just a few hundred dollars for a 2 or 4-port gateway, you can install 3CX Phone System with your existing POTS lines. Since various SIP providers offer free trials, you can use their SIP service for outbound long distance calls only until the customer feels comfortable. If all goes well, you can switch them over to the VoIP service provider and keep one POTS line for a fallback line using your SmartNode.

Connecting Incompatible Legacy Equipment

For many businesses, it may be advantageous to utilize legacy (analog or ISDN) telephones, fax machines, overhead paging speakers, etc. rather than replacing every single endpoint with a brand new IP device all at once. The SmartNode Gateway gives SMBs the ability to connect this existing equipment to their 3CX Phone System.

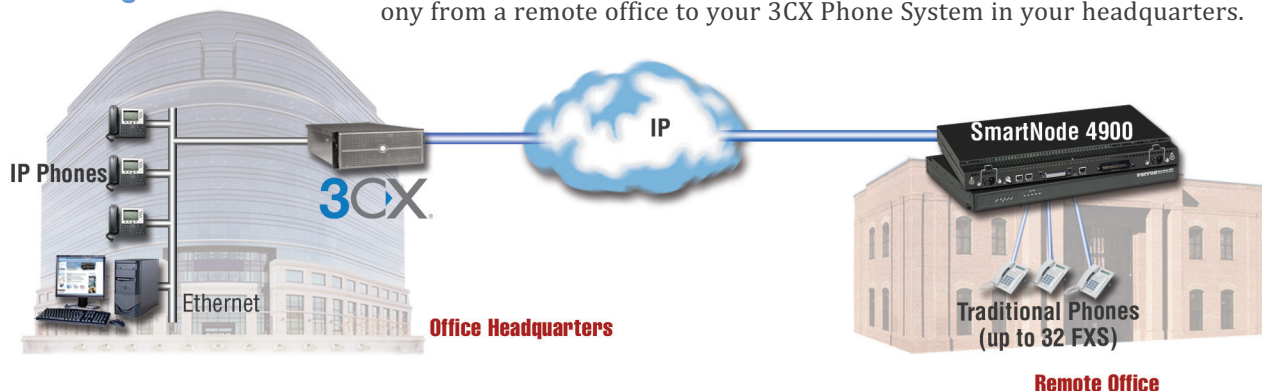
Not Compatible with 3CX Phone System

- BRI
- PRI
- FXS
- FXO



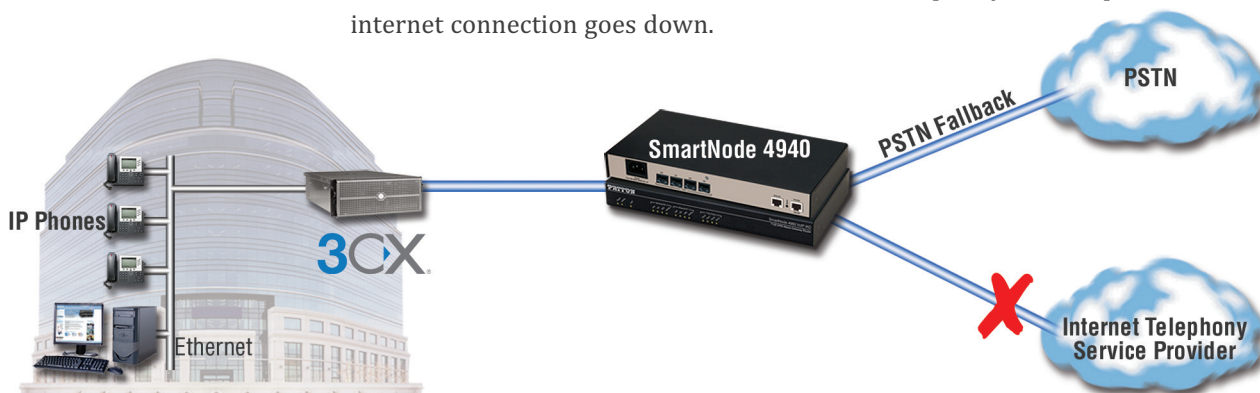
Connecting Remote Offices

The SmartNode Gateway can be used to connect analog, ISDN and IP telephony from a remote office to your 3CX Phone System in your headquarters.



SIP Trunking with Fallback/Survivability

A SmartNode ensures SMB's telephony continuity by setting their VoIP phone network up with survivability. A SmartNode VoIP Gateway can be used to fall-back to the PSTN in cases where the Internet telephony service provider or internet connection goes down.



SmartNode VoIP Gateways

- Integrates IP and TDM communications
- Analog FXS/FXO, digital ISDN BRI and T1/E1/PRI Telephony Interfaces
 - 1 to 32 FXS/FXO
 - 1 to 8 ISDN BRI
 - 1 to 4 T1/E1/PRI
- 1 to 120 VoIP or fax call capacity
- Options for internal IP router, WAN interface and transcoding functionality
- Supports simultaneous SIP, H.323, ISDN and POTS calling—plus T.38 faxing



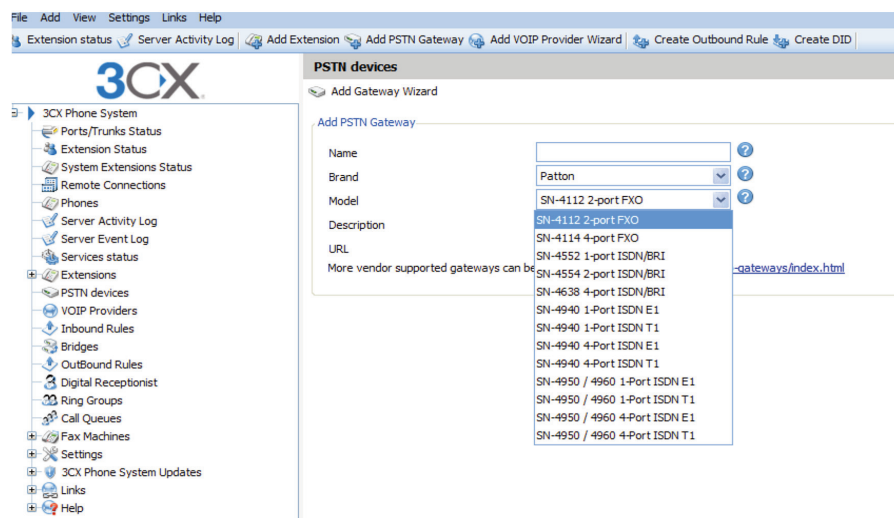
3CX Preferred Gateways

Ports*	SmartNode Model
2 FXO	SN4112
4 FXO	SN4114
1 BRI TE	SN4120
2 BRI TE	SN4120
3 BRI TE	SN4634
5 BRI TE	SN4638
1 T1/E1	SN4970/80/90
4 T1/E1	SN4970/80/90

*For additional SmartNode models (including those with FXS interfaces), go to www.patton.com/smartnode.

Configuration

3CX Phone System provides a Gateway Wizard to automatically generate a config file for your SmartNode Gateway in 3 easy steps! A step-by-step configuration guide is available on the 3CX website at www.3cx.com/blog/support under the *Supported PSTN Gateways* section.



Why SmartNode with 3CX?

For more information visit:
www.patton.com/smartnode

- Seamless integration with 3CX and auto-provisioning
- Patton Quality and Reliability
- Industry-Best Customer Support (FREE)
- Proven Interoperability
- Robust Enterprise Feature Sets and Functionality
- Swiss Engineered. Made in the USA.

www.patton.com

Patton Electronics Co.

7622 Rickenbacker Drive
Gaithersburg, Maryland 20879
USA

Phone **+1 301 975 1000**
Fax **+1 301 869 9293**
E-mail **sales@patton.com**

Patton-Inalp Networks AG

Meriedweg 7
CH-3172 Niederwangen
Switzerland

Phone **+41 (31) 985 25 25**
Fax **+41 (31) 985 25 26**
E-mail **sales@inalp.com**

Patton Hungary Zrt

Gábor Dénes utca 4.
Infopark Building C, Budapest H-1117
Hungary

Phone **+36 1 439 4840**
Fax **+36 1 439 4844**
E-mail **ce@patton.com**



PATTON[®]
Let's Connect![™]