

PRITON[®]

SOLUTIONS

From the leader in network access, connectivity, VoIP and mobile video-surveillance gear

BODi rS[™]

More Bandwidth. More Reliability. More Survivability.

**Supplement or Replace your Existing
MPLS. Aggregate Multiple Wired and
Wireless Links for Enhanced Band-
width and Survivability**

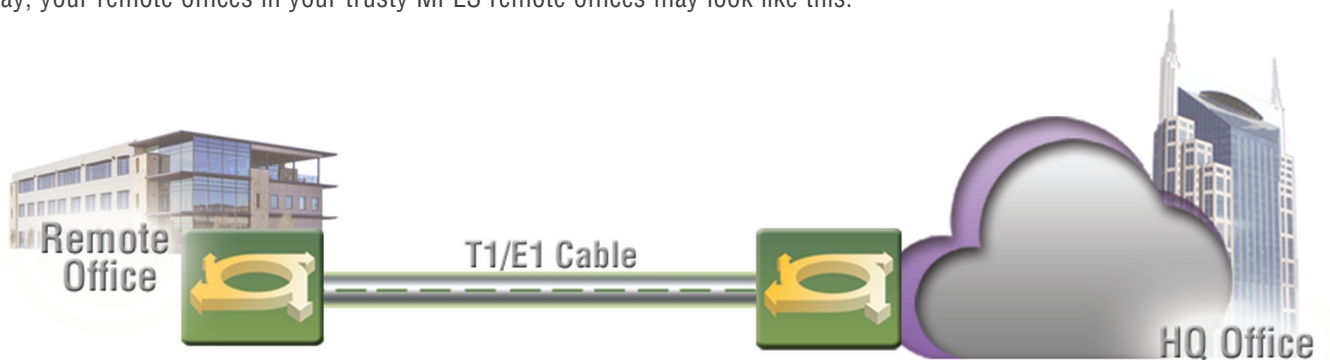


Are you getting value from your MPLS Network?

Traditionally, the need for MPLS is obvious over a (Best Effort IP Network) BEIPnet. They are flexible, scalable and highly performance oriented to companies that have the need for guaranteed data delivery. However, the average cost of each endpoint on an MPLS network is about \$450.00 Mbps per month. Plus, you are most likely enduring the following problems:

- T1/E1 or fractional speeds
- Paying a super premium for your lease line
- Single point of failure at your remote location
- Paying to add more leased line connections into the existing MPLS network

Today, your remote offices in your trusty MPLS remote offices may look like this:



Solutions Benefits

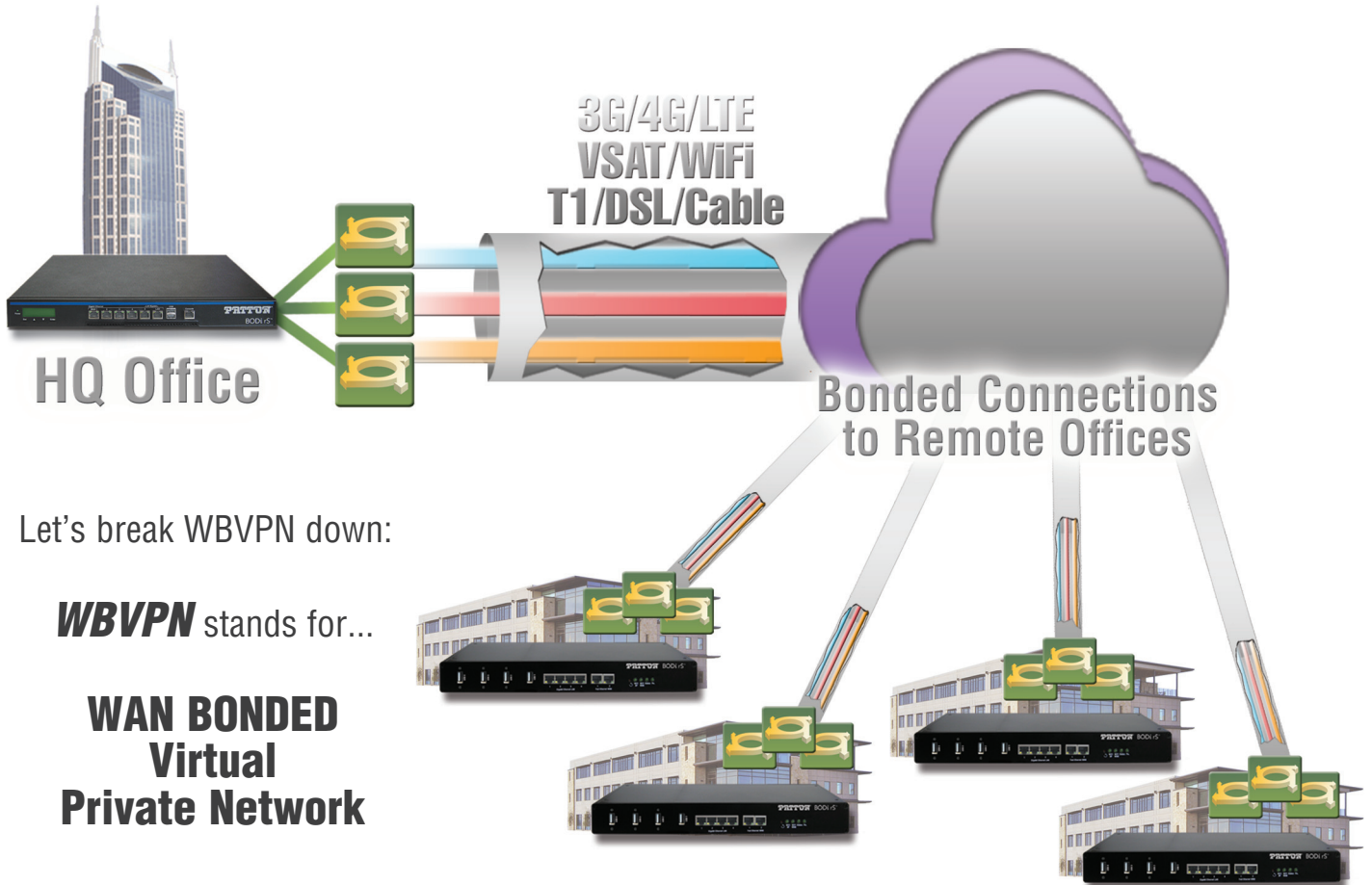
- ✓ Ideal for small and medium sized enterprises wishing to avoid expensive recurring costs
- ✓ **Cost Effective:** 5% of the monthly cost of MPLS
- ✓ **Scalable:** One-to-one, one-to-many
- ✓ **Secure:** IPsec, 256 Bit-AES Encryption, Firewall
- ✓ **Flexible:** Any network, any connection
- ✓ **Reliable:** Multiple wired and wireless connections ensuring five 9's availability
- ✓ **WAN Bonding**
- ✓ **Intelligent Load Balancing**

BODi rS WBVPN Solutions offer multiple service providers for seamless failover

A Modern Solution

With BODi's WAN Aggregation and Intelligent Load Balancing technologies you can immediately solve the above problems and drastically cut your recurring monthly costs without losing performance. And this guide explains how!

Today your remote offices could look like this:



Let's break WBVPN down:

WBVPN stands for...

**WAN BONDED
Virtual
Private Network**

Web bonding is a new technology that allows you to combine multiple WAN providers (similar or dissimilar) into an aggregated WAN connection (*fatter pipe*) to your other VPN endpoint.

This allows you to add more bandwidth to your existing remote office or office's and reduce the existing data bottle neck you are experiencing right now. Each WAN interface on your BODi rS is capable of maintaining a separate but Bonded VPN connection to each Remote or central location. This means that your data packet distribution can be sent out multiple links and even take different paths in the cloud to your destination. All this delivers enhanced bandwidth and seamless failover for guaranteed high availability.

High Speed Internet & Reliability

Ordering Info

BODi rS BD007: Enterprise Grade Bonding and Balancing Internet Router

BODi rS BD004: Mobile, Bonding and Balancing Internet Router

BODi rS BD1000: Bandwidth-on-Demand Internet Network Appliance

www.patton.com

Patton Electronics Co.

7622 Rickenbacker Drive
Gaithersburg, Maryland 20879
USA

Phone **+1 301 975 1000**

Fax **+1 301 869 9293**

E-mail **sales@patton.com**

Patton-Inalp Networks AG

Meriedweg 7
CH-3172 Niederwangen
Switzerland

Phone **+41 (31) 985 25 25**

Fax **+41 (31) 985 25 26**

E-mail **sales@inalp.com**

Patton Hungary Zrt

Gábor Dénes utca 4.
Infopark Building C, Budapest H-1117
Hungary

Phone **+36 1 439 4840**

Fax **+36 1 439 4844**

E-mail **ce@patton.com**

