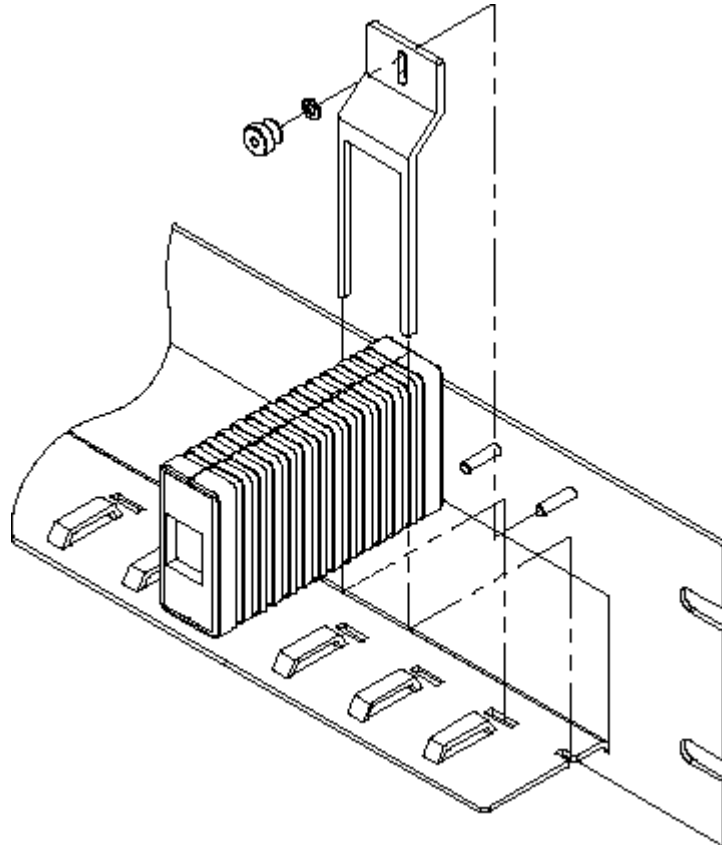


1001MP16 Universal Mounting Panel Assembly Instructions



- 1) Position clip (as shown above) over 2nd groove from front of module and slide down until opening in clip rests on top of module.
- 2) Position module and clip on stud on backside of panel and push clip legs into slots on panel flange. (This may require slight rotation from front to back of module.)
- 3) Once module is resting on panel flange (positioned between "bridges") and clip is positioned on stud, secure the clip in place with locking washer and thumb nut.