

# USER MANUAL

---

## MODEL 2025 Parallel to Serial/ Serial to Parallel Interface Converter



**PE PATTON**  
**Electronics Co.**



An ISO-9001  
Certified Company

Part # 07M2025-B  
Doc. #102041U,  
Rev. C  
Revised 1/23/08

SALES OFFICE  
(301) 975-1000  
TECHNICAL SUPPORT  
(301) 975-1007  
<http://www.patton.com>

## **1.0 WARRANTY INFORMATION**

**Patton Electronics** warrants all Model 2025 components to be free from defects, and will—at our option—repair or replace the product should it fail within one year from the first date of shipment.

This warranty is limited to defects in workmanship or materials, and does not cover customer damage, abuse or unauthorized modification. If this product fails or does not perform as warranted, your sole recourse shall be repair or replacement as described above. Under no condition shall **Patton Electronics** be liable for any damages incurred by the use of this product. These damages include, but are not limited to, the following: lost profits, lost savings and incidental or consequential damages arising from the use of or inability to use this product. **Patton Electronics** specifically disclaims all other warranties, expressed or implied, and the installation or use of this product shall be deemed an acceptance of these terms by the user.

### **1.1 RADIO AND TV INTERFERENCE**

The Model 2025 generates and uses radio frequency energy, and if not installed and used properly—that is, in strict accordance with the manufacturer's instructions—may cause interference to radio and television reception. The Model 2025 has been tested and found to comply with the limits for a Class A computing device in accordance with the specifications in Subpart J of Part 15 of FCC rules, which are designed to provide reasonable protection from such interference in a commercial installation. However, there is no guarantee that interference will not occur in a particular installation. If the Model 2025 does cause interference to radio or television reception, which can be determined by disconnecting the RS-232 interface, the user is encouraged to try to correct the interference by one or more of the following measures: moving the computing equipment away from the receiver, re-orienting the receiving antenna and/or plugging the receiving equipment into a different AC outlet (such that the computing equipment and receiver are on different branches).

### **1.2 CE NOTICE**

The CE symbol on your Patton Electronics equipment indicates that it is in compliance with the Electromagnetic Compatibility (EMC) directive and the Low Voltage Directive (LVD) of the Union European (EU). A Certificate of Compliance is available by contacting Technical Support.

### 1.3 SERVICE

All warranty and non-warranty repairs must be returned freight prepaid and insured to Patton Electronics. All returns must have a Return Materials Authorization number on the outside of the shipping container. This number may be obtained from Patton Electronics Technical Support: **(301) 975-1007**; **<http://www.patton.com>**; or, **support@patton.com**.

**NOTE:** Packages received without an RMA number will not be accepted.

Patton Electronics' technical staff is also available to answer any questions that might arise concerning the installation or use of your Model 2025. Technical Support hours: **8AM to 5PM EST, Monday through Friday**.

## **2.0 GENERAL INFORMATION**

Thank you for your purchase of this Patton Electronics product. This product has been thoroughly inspected and tested and is warranted for One Year parts and labor. If any questions arise during installation or use of the unit, contact Patton Electronics Technical Support: **(301) 975-1007**; <http://www.patton.com>; or, [support@patton.com](mailto:support@patton.com).

### **2.1 FEATURES**

- Converts parallel data to serial data and vice versa
- Automatic parallel and serial sensing and selection
- Automatic DCE/DTE sensing and selection
- Serial data rates up to 38,400 bps
- No AC power required
- Supports both software and hardware flow control
- Ultra-miniature size
- A five-state LED monitors status and diagnostics
- Variety of connectors and cable lengths
- Made in USA

### **2.2 DESCRIPTION**

**The Patton Model 2025 Parallel to Serial Converters** automatically convert RS-232 serial data to parallel data format and vice versa. Incorporating advanced microprocessor technology, the Model 2025 is able to automatically sense and select parallel and serial modes, as well as DTE/DCE modes. The Model 2025 requires no AC power and supports serial data rates from 300 to 38,400 bps.

For easy configuration, the Model 2025 features a convenient set of configuration switches. The configuration switches allow the user to control baud rate, parity, word length and flow control. An easy-to-read LED indicator displays status and operating condition.

Housed in an ultra-miniature ABS plastic case, the Model 2025 measures only 2.62" x 1.26" x .76". The Patton Model 2025 comes equipped with a DB-25 female connector on the serial side, and a Centronics 36 pin male connector on the parallel side. A six foot integral cable is also included.

### 3.0 CONFIGURATION

The Model 2025 is simple to install and designed for excellent reliability: just set it and forget it. The following instructions will help you set up and install the converters properly. If you have any questions, please call Patton Technical Support at (301) 975-1007.

#### 3.1 CONFIGURATION SWITCHES

The Model 2025 uses a set of eight external DIP switches (see Figure 1) that allow configuration to a wide range of applications. Because all eight switches are in one externally accessible DIP switch package, there is no need to open the case for configuration. The configuration switches allow you to select data rates, parity, word length and flow control selection. The following section describes all switch locations, positions and functions.

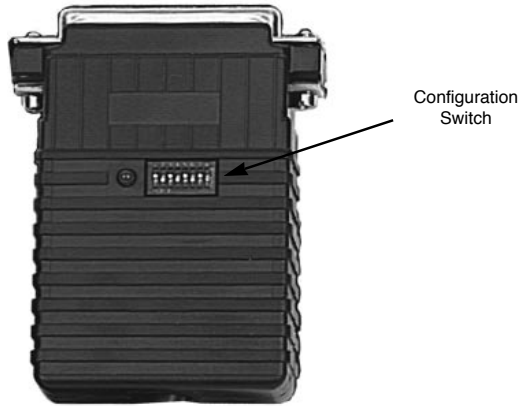


Figure 1. The location of the configuration switches

The Model 2025 uses a *miniature* configuration switch package (see Figure 2). To configure your unit, use a small screwdriver and gently push each switch to its proper setting. The ON and OFF positions are shown in Figure 2. Default settings for the DIP switches are shown in the table on the following page. Detailed settings follow the table.

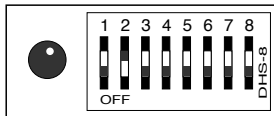


Figure 2. The miniature configuration switch package

DIP SWITCH SUMMARY TABLE		
Position	Function	Factory Default
SW1	Flow Control	Off Hardware
SW2	LED Indicator	On Enabled
SW3	Data, Parity, Stop Bits	Off
SW4	Data, Parity, Stop Bits	Off
SW5	Data, Parity, Stop Bits	Off
SW6	Data Rate	Off
SW7	Data Rate	Off
SW8	Data Rate	Off

} 8B, NP, 1S

} 9600 bps

### 3.2 DETAILED SWITCH SETTINGS

This section provides detailed information about the function of each DIP switch and lists all possible settings.

#### Switch 1: Hardware/Software Control

The setting for Switch 1 determines whether the Model 2025 will have either hardware or software flow control.

Flow Control	SW1
Hardware	OFF
Software	ON

#### Switch 2: LED Indicator

The setting for Switch 2 determines whether the LED indicator is enabled or disabled.

LED	SW2
Enabled	ON
Disabled	OFF

### Switch 3 through 5: Data, Parity and Stop Bit

Switches 3 through 5 are used to specify the data, parity and stop bits. The following table shows the settings that may be used:

Data	Parity	Stop Bit	SW3	SW4	SW5
7B	EP	1S	ON	ON	ON
7B	OP	1S	OFF	ON	ON
7B	NP	2S	ON	OFF	ON
7B	EP	2S	OFF	OFF	ON
7B	OP	2S	ON	ON	OFF
8B	EP	1S	OFF	ON	OFF
8B	OP	1S	ON	OFF	OFF
8B	NP	1S	OFF	OFF	OFF

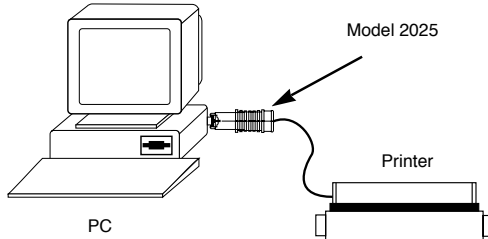
### Switches 6 through 8: Frequency and Data Rate

Switches 6 through 8 determine the frequency and data rate. The following chart shows the settings that may be used.

Model 2025			
Data Rate	SW6	SW7	SW8
300	OFF	OFF	ON
600	ON	OFF	ON
1200	ON	ON	OFF
2400	OFF	ON	ON
4800	ON	ON	ON
9600	OFF	OFF	OFF
19200	ON	OFF	OFF
38400	OFF	ON	OFF

## 4.0 INSTALLATION

The Patton Model 2025 is very simple to install. Once you have configured the DIP switches, just plug it in like a normal cable and you're ready to go. Figure 3 illustrates the proper connections for the standard cables. If you have special-ordered a non-standard connector, your connections may be different.



**Figure 3.** Installing the Model 2025



## 5.0 OPERATION

Once your interface converter is properly configured and installed, it should operate transparently—as if it were a standard cable connection. Operating power is derived from the RS-232 data and control signals; there is no “ON/OFF” switch.

### 5.1 LED STATUS MONITORS

The Model 2025 features an easy-to-read status LED that glows red to indicate the condition of the transmission line. Figure 1 shows the location of the LED. The following chart describes the LED's various functions.

LED Codes	
● ● - ● ---- ● ● - ● ----	Computer is sending data
● ---- ● ---- ● ----	Serial device is connected; computer is not sending data
● ● ---- ● ● ----	Both serial and parallel devices are connected; computer not sending data
● - ● ---- ● - ● ----	Printer not ready, data held in buffer
● ● ● ● ---- ● ● ● ●	Computer ignoring flow control, data lost

The red LED indicator blinks to show data activity. Since there is only one indicator, it uses different LED codes to demonstrate various messages. The following chart describes these codes:

Key:	
●	Blink
-	Short pause
---	Long pause

## **APPENDIX A**

### **PATTON MODEL 2025 SPECIFICATIONS**

<b>Interface:</b>	Asynchronous., RS-232C compatible
<b>Connectors:</b>	Serial, DB-25F; parallel, Centronics 36 pin M
<b>Cables:</b>	Six foot integral cable
<b>Data Rates:</b>	0 - 38,400 Kbps
<b>LED:</b>	LED displays status and operating condition
<b>Power Supply:</b>	None required; uses power from RS-232 interface
<b>Data Format:</b>	7 or 8 bits; 1 or 2 stop bits; even, odd or no parity
<b>Temperature Range:</b>	0-60°C (32-140°F)
<b>Altitude:</b>	0-10,100 feet
<b>Humidity:</b>	5 to 95% non-condensing
<b>Dimensions:</b>	2.62" x 1.26" x .76"
<b>Weight:</b>	2 oz

**APPENDIX B**  
**PATTON MODEL 2025 INTERFACE CONNECTIONS**

**36 PIN CENTRONICS PARALLEL PORT CONNECTIONS**

Pin	Description	Direction	
1	Strobe	Output	
2	Data bit 0	} I/O	
3	Data bit 1		
4	Data bit 2		
5	Data bit 3		
6	Data bit 4		
7	Data bit 5		
8	Data bit 6		
9	Data bit 7		
10	Acknowledge	Input (active low)	
11	Busy	Input (active high)	
12	Paper end		
13	Select		
18	+5 volts		
32	Error		
	(16, 17, 19, 20, 21, 22, 23, 24, 25, 26, 27, 28, 29, 30, 33, 36)		} Ground

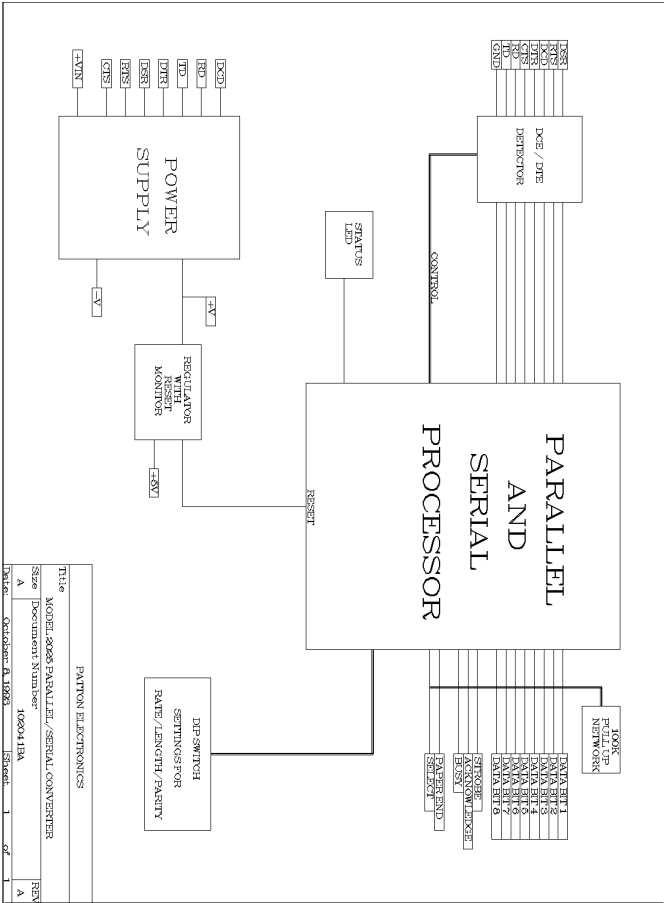
Note: All other pins are unconnected

**DB-25 SERIAL PORT CONNECTIONS**

Pin	Name	Description
1	FG	Connected to pin 7 with optional jumper
2	TXD	Serial Transmit Data; also used as a power source
3	RXD	Serial Receive Data; also used as a power source
4	RTS	Request to Send; also used as a power source
5	CTS	Clear to Send; also used as a power source
6	DSR	Data Set Ready; also used as a power source
7	SG	Signal Ground
8	DCD	Carrier Detect; also used as a power source
9	+V in	Used as a power source
20	DTR	Data Terminal Ready; also used as a power source

Note: All other pins are unconnected

## APPENDIX C PATTON MODEL 2025 BLOCK DIAGRAM



Copyright ©  
Patton Electronics Company  
All Rights Reserved







Dear Valued Customer,

Thank you for purchasing Patton Electronics products! We do appreciate your business. I trust that you find this user manual helpful.

We manufacture one of the widest selections of data communications products in the world including CSU/DSU's, network termination units, powered and self-powered short range modems, fiber optic modems, interface converters, baluns, electronic data switches, data-line surge protectors, multiplexers, transceivers, hubs, print servers and much more. We produce these products at our Gaithersburg, MD, USA, facility, and can custom manufacture products for your unique needs.

We would like to hear from you. Please contact us in any of the following ways to tell us how you like this product and how we can meet your product needs today and in the future.

Web:	<a href="http://www.patton.com">http://www.patton.com</a>
Sales E-mail:	<a href="mailto:sales@patton.com">sales@patton.com</a>
Support E-mail:	<a href="mailto:support@patton.com">support@patton.com</a>
Phone - Sales	(301) 975-1000
Phone - Support	(301) 975-1007
Fax:	(301) 869-9293
Mail:	Patton Electronics Company 7622 Rickenbacker Drive Gaithersburg, MD 20879 USA

We are committed to a quality product at a quality price. Patton Electronics is ISO 9001 certified. We meet and exceed the highest standards in the industry (CE, UL, etc.).

It is our business to serve you. If you are not satisfied with any aspect of this product or the service provided from Patton Electronics or its distributors, please let us know.

Thank you.

Burton A.Patton  
Vice President

P.S. Please tell us where you purchased this product.

---

---

---

---

---

---

---