



Overview

The Multi Router Traffic Grapher (MRTG) is a tool used to monitor and graph performance statistics of SNMP-based equipment. For example, MRTG may be used to monitor traffic on network-links, active callers on a Remote Access Server, internal temperature of equipment, etc.

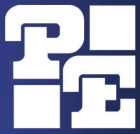
MRTG generates graphic images that can be used to build web pages. Such a web page may potentially consolidate traffic information from many pieces of equipment. Conceivably, a single web page could provide consolidated monitoring information for a large number of devices.

MRTG provides graphics representing daily, weekly, monthly and yearly views of the monitored devices. MRTG is written in PERL and C and operates under UNIX and Windows NT.

WEB Links

Some helpful links are provided in the table below:

Patton's MRTG Web Site: Monitors Patton RAS devices throughout the U.S.	http://mrtg.patton.com
MRTG Home Page	no longer available
MRTG Configuration Tips	link no longer available
Patton's Knowledge Base	http://www.patton.com/cgi-patton/catalog-bin/allpress.cgi?all=1
Patton Electronics FAQ's	http://www.patton.com/cgi-patton/faq/smartfaq.cgi
Patton Electronics Users Group (PUG)	http://pug.patton.com



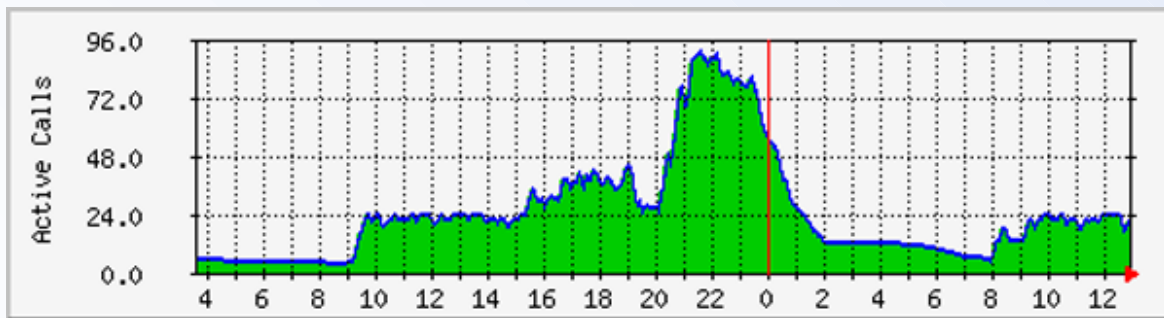
Example Graphs

In the following pages, four sample graphs generated by a Patton 2996 Remote Access Server will be shown. The first two graphs show the number of dial-in calls over 5 and 30-minute averages. The last two graphs show RAS internal temperature over 5 and 30-minute averages.

Graphs Showing the Number of Dial-In Calls

Active Calls on Patton Model 2996

'Daily' Graph (5 Minute Average)



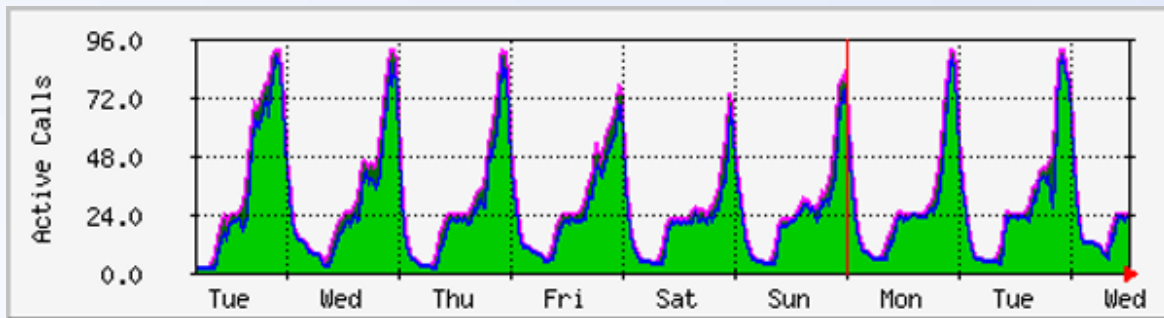
Max **In**: 92 Active Callers Average **In**: 25 Active Callers Current **In**: 22 Active Callers
 Max **Out**: 92 Active Callers Average **Out**: 25 Active Callers Current **Out**: 22 Active Callers

Legend	
GREEN ###	Active Calls
BLUE ###	Active Calls
DARK GREEN###	5 minute Active Calls
MAGENTA###	5 Minute Active Calls



Example Graphs (continued...)

'Weekly' Graph (30 Minute Average)



Max In:	92 Active Callers	Average In:	26 Active Callers	Current In:	24 Active Callers
Max Out:	92 Active Callers	Average Out:	26 Active Callers	Current Out:	24 Active Callers

Example MRTG Script: Active Calls

The following MRTG script generated the two active-call graphs shown above:

```

WorkDir: /var/www/html
#####Patton Closet Active Calls###

Target[pattoncalls]:1.3.6.1.4.1.1768.5.25.0&1.3.6.1.4.1.1768.5.25.0:monitor@1
92.168.200.1
WithPeak[pattoncalls]: wmy
Unscaled[pattoncalls]: dwmy
Options[pattoncalls]: growright, nopercnt, integer,absolute,gauge
MaxBytes[pattoncalls]: 96
AbsMax[pattoncalls]: 96
Title[pattoncalls]: 2996Active Calls
Ylegend[pattoncalls]: Active Calls
ShortLegend[pattoncalls]: Active Callers
Legend1[pattoncalls]: Active Calls
Legend2[pattoncalls]: Active Cals
Legend3[pattoncalls]: 5 minute Active Calls
Legend4[pattoncalls]: 5 Minute Active Calls
PageTop[pattoncalls]: <H1> Patton Dial-Up - Active Calls on Patton Model
2996</H1>

##### end temp #####

```

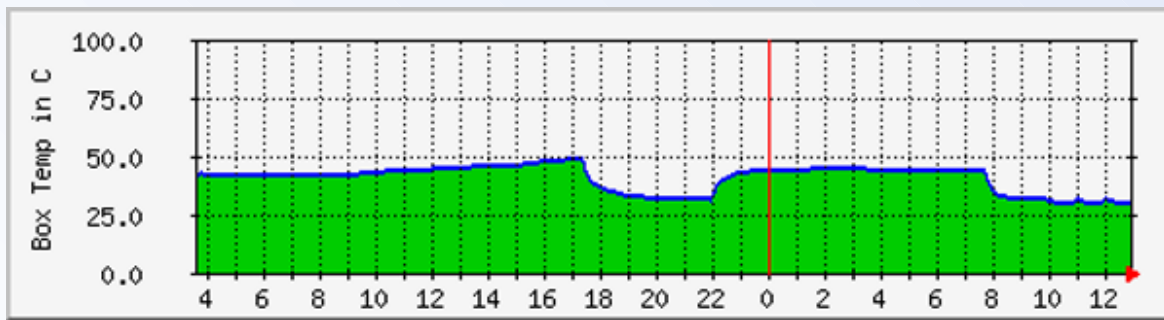


Example Graphs (continued...)

Graphs Showing RAS Internal Temperature

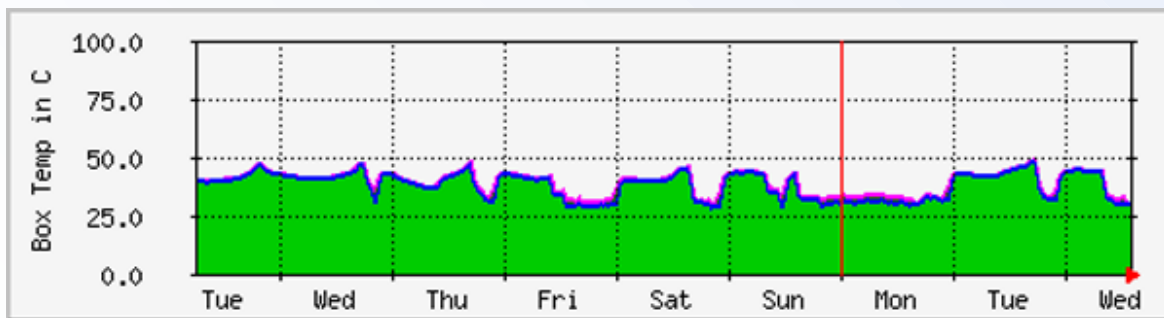
Box Temp on Patton Model 2996

'Daily' Graph (5 Minute Average)



Max In:	49 Degrees-C	Average In:	40 Degrees-C	Current In:	30 Degrees-C
Max Out:	49 Degrees-C	Average Out:	40 Degrees-C	Current Out:	30 Degrees-C

'Weekly' Graph (30 Minute Average)



Max In:	49 Degrees-C	Average In:	37 Degrees-C	Current In:	30 Degrees-C
Max Out:	49 Degrees-C	Average Out:	37 Degrees-C	Current Out:	30 Degrees-C



Example Graphs (continued...)

Example MRTG Script: *Box Temperature*

The following MRTG script generated the two box-temperature graphs shown above:

```
#WorkDir: /var/www/html
####Patton Closet Temp ###

Target[pattontemp]:
1.3.6.1.4.1.1768.20.1.31.0&1.3.6.1.4.1.1768.20.1.31.0:monitor@192.168.2
00.1
WithPeak[pattontemp]: wmy
Unscaled[pattontemp]: dwmy
Options[pattontemp]: growright, nopercnt, integer,absolute,gauge
MaxBytes[pattontemp]: 100
AbsMax[pattontemp]: 100
Title[pattontemp]: 2996 Box Temp
Ylegend[pattontemp]: Box Temp in C
ShortLegend[pattontemp]: Degrees-C
Legend1[pattontemp]: Current Temp
Legend2[pattontemp]: Current Temp
Legend3[pattontemp]: 5 minute Avg Temp
Legend4[pattontemp]: 5 Minute Avg Tem
PageTop[pattontemp]: <H1> Patton Dial-Up - Box Temp on Patton Model
2996 </H1>
```