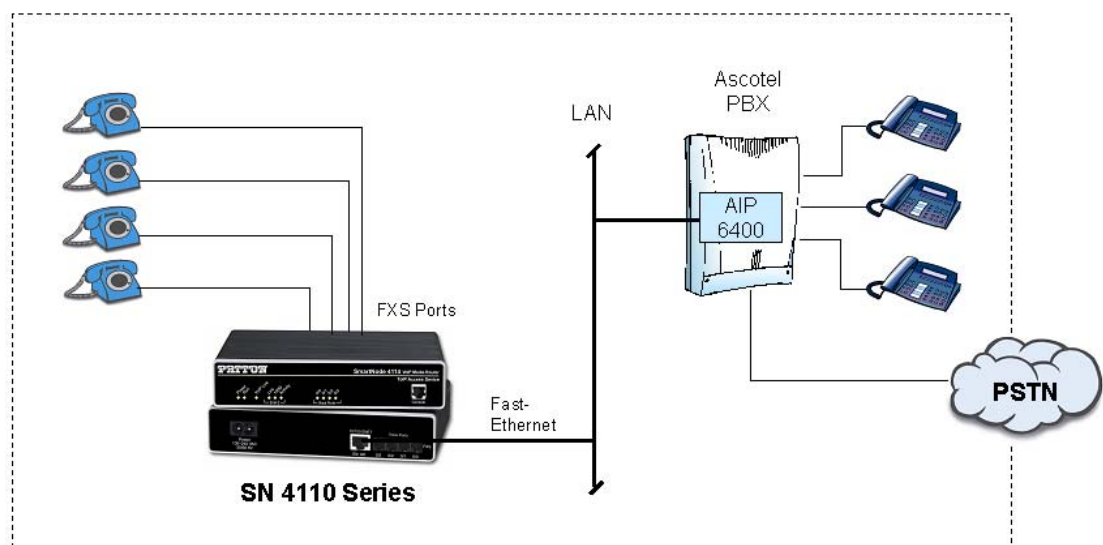


# Configuration Note

## SmartNode 4110 Series as Terminal Gateway on the Ascotel AIP6400

### System Overview

This configuration note describes the installation of a SmartNode of the 4110 Series used as a Terminal-Gateway connecting legacy POTS telephones to the AIP6400 card of the Ascotel System. Depending on the SmartNode model up to 8 analog terminals can be connected to the LAN.



*Figure 1: Overview of the Application*

The following elements must be available in the Network:

- Ascotel with AIP6400 card running the H.323 Gateway and Gatekeeper
- One or several SmartNodes and attached POTS Telephones
- A connecting Ethernet Network. Switched Ethernet or routed IP

The configuration file contains the configuration for 1 SmartNode with 2 terminals. Any number of SmartNodes with 2-8 ports each can be added to the network.

Further you will have to change some parameters to adapt to your specific network, for example the numbering plan. Figure 2 displays these details of the example network i.e. extension numbers.

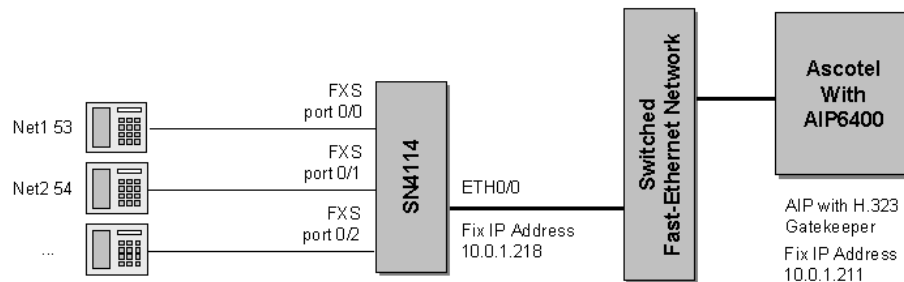
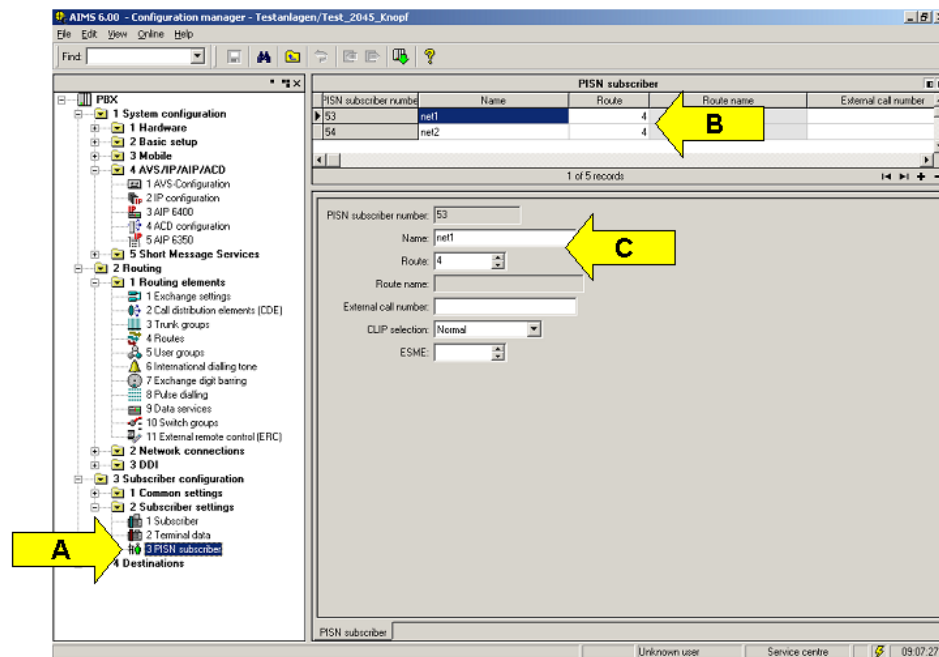


Figure 2: network schematic

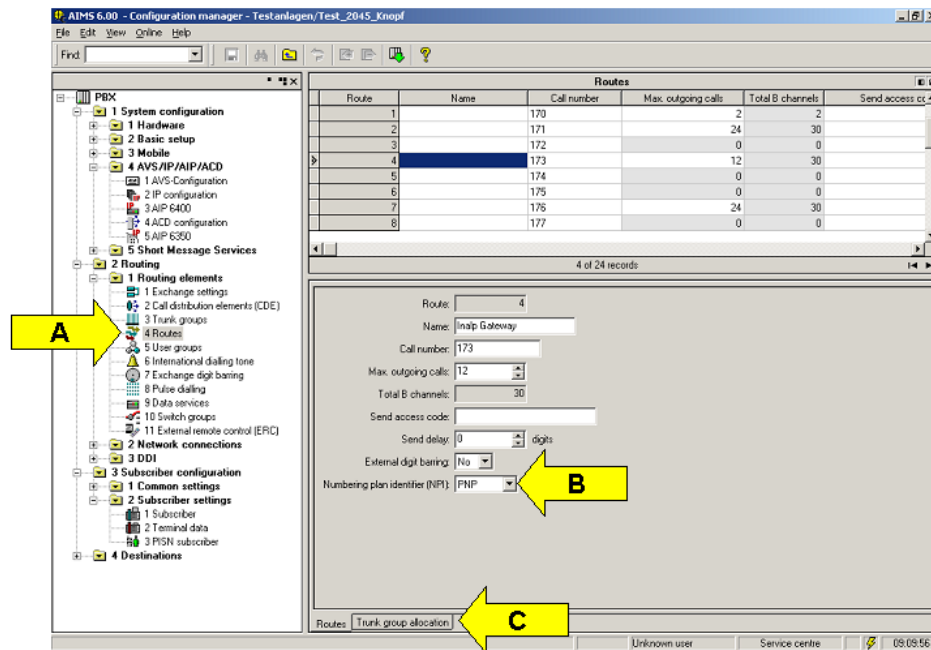
Note that this Configuration Note provides a basic setup which is intended to get you started quickly and make a first call. In some cases the minor adaptations described hereafter will be sufficient for your network. However, the SmartNode has many additional configuration options which allow to fit the product in various network scenarios. Please consult the SmartWare Software Configuration Guide for the complete configuration documentation.

## Ascotel Configuration

Follow these steps to configure an extension which is terminated on a SmartNode FXS port. Start with the Extension and call routing configuration in the Ascotel AIMS configuration tool.

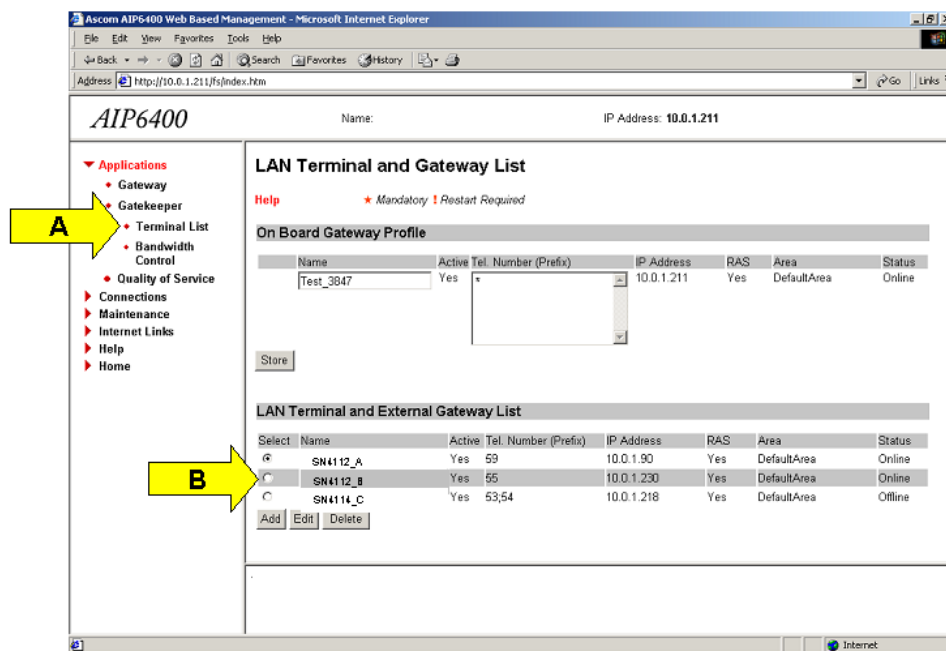


Create PISN extensions for all the phones connected to a SmartNode. Assign a name and Route (Leitweg) to each extension.

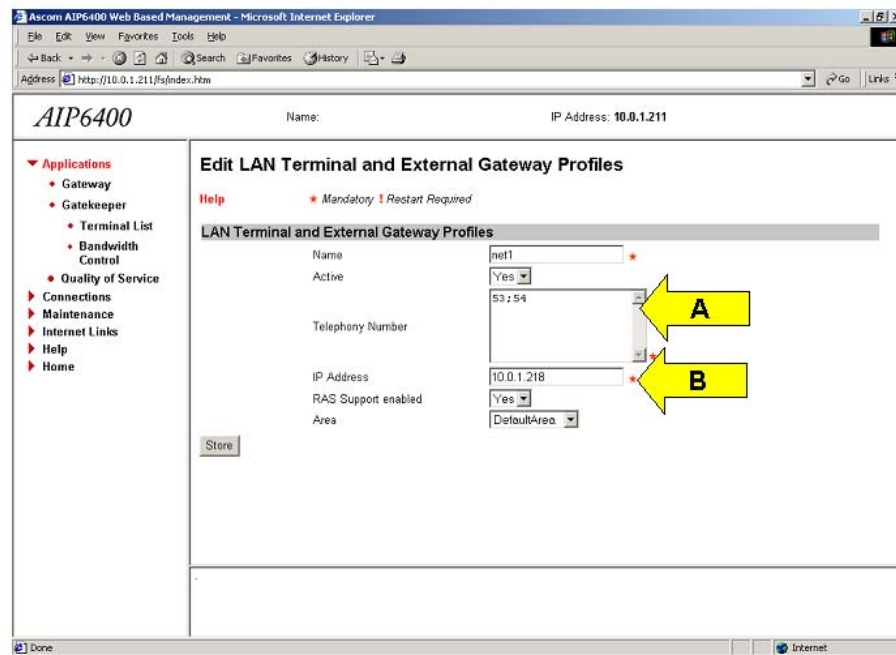


Specify the numbering plan for the Route (Leitweg) as PNP (Private Numbering Plan) and ensure that the Route is assigned to the AIP6400 card.

Continue on the configuration web-page of the AIP6400 card.



Create an IP terminal for each SmartNode to be connected to the network.



Set the IP address and phone numbers for the SmartNode. Separate the individual phonenumbers with a semicolon (;).

## SmartNode Configuration

The configuration file is available as an ASCII file (.cfg) file. You can edit the configuration file with any text editor (MS Word, Wordpad). Save changed files in text (.txt) format.

The configuration files contains comments (lines with a leading #) with instructions where and how to change the parameters which may need to be adapted to your network.

For instructions on how to download the configuration using a TFTP server to the SmartNode please consult the **Quick Start Guide**.

**Note:** Please follow the instructions in the Quick Start guide **exactly - step by step** to insure that the configuration is activated correctly!

## Configuration File

sn4110\_aip\_terminal\_gw.cfg