

# Configuration Note

## SmartNode 4110 Series as Terminal Gateway in LAN Telephony Systems

### System Overview

This example configuration shows a SmartNode of the 4110 Series used as a Voice over IP Terminal-Gateway connecting legacy POTS telephones and fax-machines to the LAN. Depending on the SmartNode model up to 8 analog terminals can be connected to the LAN. The configuration will retrieve an IP address for ETH0 from a DHCP Server and register to a Gatekeeper on the network using auto-discovery.

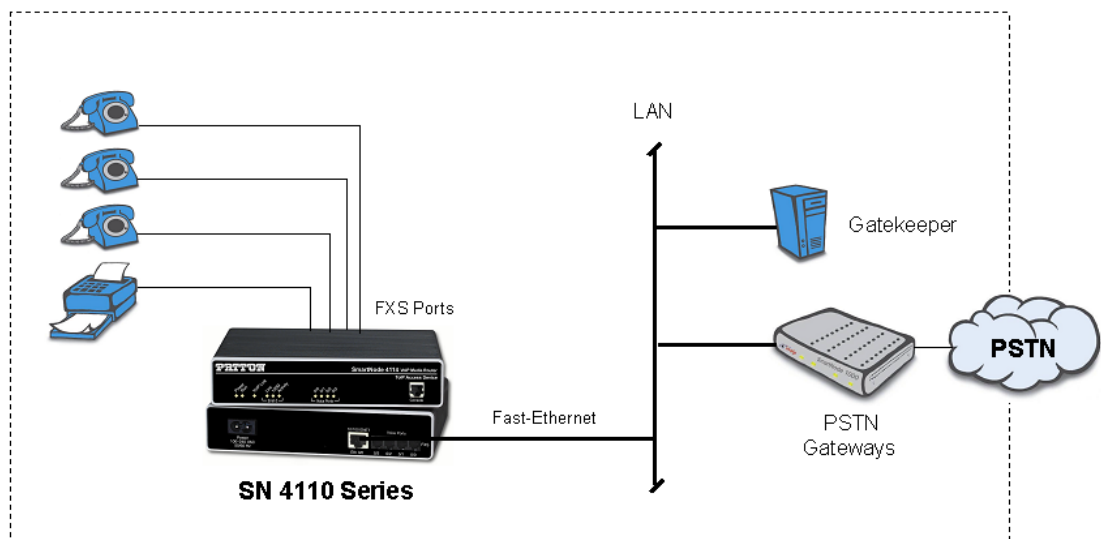


Figure 1: Schematic diagram of the example network

The following elements must be available in the LAN:

- A DHCP server providing an IP address for the SmartNode.
- An H.323 Gatekeeper providing responses to auto-discovery requests. The Gatekeeper provides functions such as authentication, call routing and address resolution. The Gatekeeper must allow terminal registrations with multiple E.164 numbers (H.323 aliases).
- Other Terminal Gateways, IP-Phones or PSTN-Gateways to call.

The configuration file contains the configuration for 8 terminals (SN4118). The configuration for the ports 0 and 1 are active, the ports 2 to 7 are commented out. Un-comment them if you want to use these additional ports.

Further you will have to change some parameters to adapt to your specific network, for example the numbering plan. Figure 2 displays these details of the example network i.e. extension numbers.

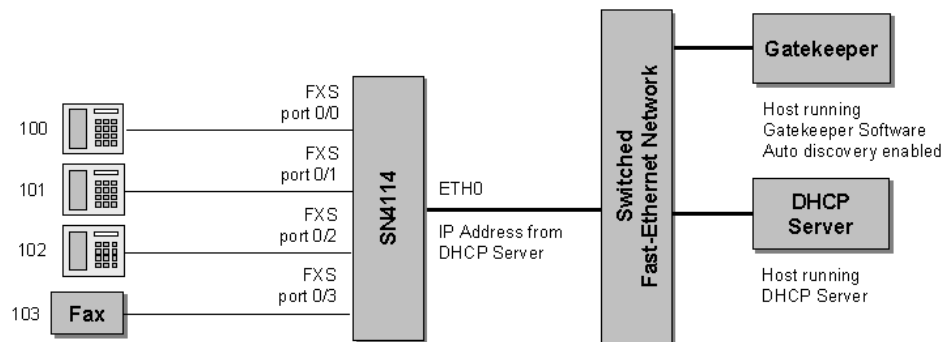


Figure 2: Detailed schematics of the complete network

The following assumption have been made for the example network:

Parameter	Example Network	Your Network
Voice Codec	G711 a law	
Gatekeeper IP Address	RAS auto-discovery	
Gatekeeper RAS Port	RAS auto-discovery	
H.323 Alias to Register at GK	ROHO1	
Subscriber Number FXS 0	100	
Subscriber Number FXS 1	101	
Subscriber Number FXS 2	102	
Subscriber Number FXS 3	103	
Subscriber Number FXS 4	104	
Subscriber Number FXS 5	105	
Subscriber Number FXS 6	106	
Subscriber Number FXS 7	107	
LAN IP Address and Netmask	From DHCP Server	
LAN default gateway	From DHCP Server	

**Note that this Configuration Note provides a basic setup which is intended to get you started quickly and make a first call. In some cases the minor adaptations described hereafter will be sufficient for your network. However, the SmartNode has many additional configuration options which allow to fit the product in various network scenarios. Please consult the SmartWare Software Configuration Guide for the complete configuration documentation.**



## How To Adapt To Your Network

The configuration file is available as an ASCII file (.cfg) file. You can edit the configuration file with any text editor (MS Word, Wordpad). Save changed files in text (.txt) format.

The configuration files contains comments (lines with a leading #) with instructions where and how to change the parameters which may need to be adapted to your network.

For instructions on how to download the configuration using a TFTP server to the SmartNode please consult the **Quick Start Guide**.

**Note:** Please follow the instructions in the Quick Start guide **exactly - step by step** to insure that the configuration is activated correctly!

### Configuration File

sn4110\_terminal\_gw.cfg