

Application Overview

This example network shows a SmartNode 4520 used as a Voice over IP access router and gateway. The SmartNode provides access to the Internet through an access modem. The modem is connected to the SmartNode through its Ethernet interface. Hence any access technology is supported e.g. cable, DSL, wireless etc. In this example it is assumed that Internet access is provided through an xDSL modem. It is typical for such networks that access and IP Address is delivered by PPPoE (verify with Provider).

Further the SmartNode provides access to an H.323 based IP telephony services using a Gatekeeper. The Gatekeeper provides service-oriented functions such as authentication, call routing and address resolution. An example for such a telephony service is the Patton-Inalp Avalanche Voice Intranet (AVI). The analog telephony equipment is connected to the FXS ports of the SmartNode. The number of FXS ports is model dependant and ranges from 2 to 8 ports.

Towards the LAN the SmartNode acts as a DHCP server.

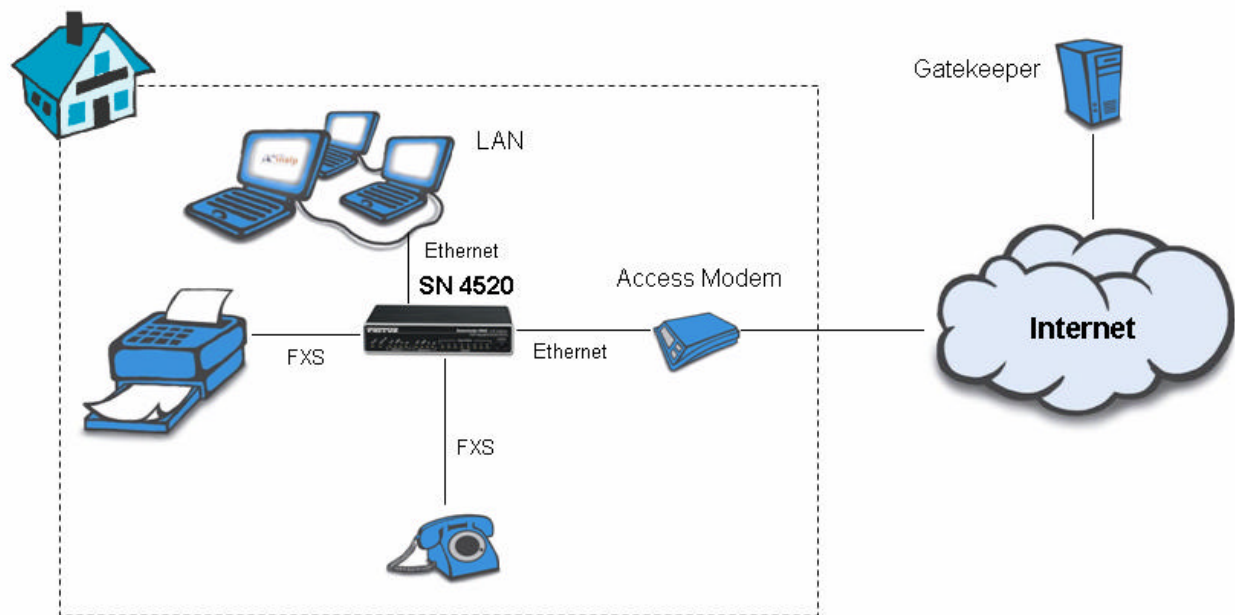


Figure 1: Schematic diagram of the example network

Complete configuration for 8 terminals is provided. The configurations for the FXS ports 0 and 1 are active, the ports 2 to 7 are commented out. Uncomment them if you want to use these additional ports.

Further you have to change some parameters to adapt to your specific network. Figure two displays these details of the example network i.e. IP addresses, subnets, SmartNode interfaces connected to the network, link bandwidth etc.

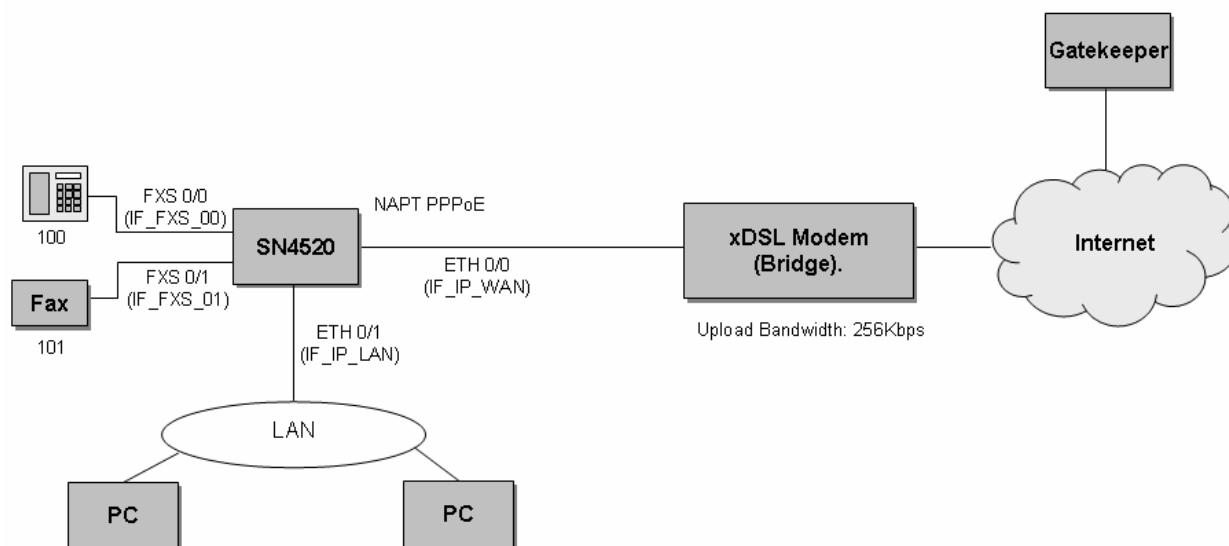


Figure 2: Detailed schematics of the complete network

Note that this Configuration Note provides a basic setup which is intended to get you started quickly and make a first call. In some cases the minor adaptations described hereafter will be sufficient for your network. However, the SmartNode has many additional configuration options which allow to fit the product in various network scenarios. Please consult the SmartWare Software Configuration Guide for the complete configuration documentation.

How To Adapt To Your Network

The configuration file is available as an ASCII file (.cfg) file. You can edit the configuration file with any text editor (MS Word, Wordpad). Save changed files in text (.txt) format.

The configuration file contains comments (lines with a leading #) with instructions where and how to change the parameters which may need to be adapted to your network. Please replace the variables to valid parameters without brackets, e.g. <IF_IP_LAN> → 192.168.1.1

For instructions on how to download the configuration using a TFTP server to the SmartNode please consult the **Quick Start Guide**.

Note: Please follow the instructions in the Quick Start guide **exactly - step by step** to insure that the configuration is activated correctly!

Configuration File

sn4520_dsl_access.cfg

Contacting Patton

If you have any questions please feel free to contact Patton's Technical Support:

- E-mail support—e-mail sent to support@patton.com will be answered within 1 business day
- Telephone support—standard telephone support is available five days a week—from 8:00 am to 5:00 pm EST (1300 to 2200 UTC)—by calling +1 (301) 975-1007

Limitation of Liability

Information in this document is subject to change without notice and does not represent a commitment on the part of Patton Electronics Company (Patton). Under no circumstance, including Patton's negligence, shall Patton be liable for any incidental, special, or consequential damages, including lost profits, that result from the use or inability to use the product or related documentation, even if Patton has been advised of the possibility of such damage. Some jurisdictions do not allow the limitation or exclusion of liability for incidental or consequential damages, so the above may not apply to you. In no event shall Patton's total liability to you for damages, losses, and causes of action exceed the amount paid by you for the Patton product.

Date Created

November 30, 2004

Last Updated

March 08, 2005



7622 Rickenbacker Drive
Gaithersburg, MD 20879
Tel: +1 301.975.1000
Fax: +1 301.869.9293
07MDSNQ0S-TN1